

2TMD041800D0010 | 30.03.2019

Product manual

ABB-Welcome IP

H81381P.-. IP pushbutton outdoor
station

H81381P.-.-02 IP pushbutton outdoor
station



1	Notes on the instruction manual.....	3
2	Safety.....	3
3	Intended use	4
4	Environment.....	5
4.1	ABB devices.....	5
5	Product description	6
5.1	Control elements	6
5.2	Interfaces.....	7
5.3	Locks and connections	8
6	Technical data	9
7	Mounting/Installation.....	10
7.1	Requirement for the electrician.....	10
7.2	Mounting.....	11
7.2.1	Preparation	11
7.2.2	Wiring.....	11
7.2.3	Surface-mounted installation.....	12
7.2.4	Flush-mounted installation	12
7.2.5	Cavity wall installation	14
7.2.6	Dismantling.....	15
7.2.7	Replacing the nameplate.....	15
8	Commissioning	16
9	Operation	18
9.1	Calling a resident	18
9.2	Calling the guard unit	18
9.3	Turn on the light	19
10	FCC.....	20
11	Cyber security.....	21
11.1	Disclaimer.....	21
11.2	Performance and service	21
11.3	Deployment guideline	22
11.4	Upgrading.....	22
11.5	Backup/Restore.....	22
11.6	Malware prevention solution	22
11.7	Password rule	22

1 Notes on the instruction manual

Please read through this manual carefully and observe the information it contains. This will assist you in preventing injuries and damage to property, and ensure both reliable operation and a long service life for the device.

Please keep this manual in a safe place. If you pass the device on, also pass on this manual along with it. ABB accepts no liability for any failure to observe the instructions in this manual.

2 Safety



Warning

Electric voltage!

Dangerous currents flow through the body when coming into direct or indirect contact with live components.

This can result in electric shock, burns or even death.

- Disconnect the mains power supply prior to installation and/or disassembly!
- Permit work on the 100-240 V supply system to be performed only by specialist staff!

3 Intended use

As part of the ABB-Welcome IP system, this device can only be used with accessories from that system.

Security mode

This outdoor station runs in "Security mode" by default to guarantee high security.

In "Security mode", this outdoor station requires a certificate issued by the management software before it can function normally.

Compatible mode

If there is no management software, this outdoor station needs to run in "Compatible mode" to function normally. This can be set on the indoor station. Please refer to the product manual for . IP touch 7".

Video privacy



Video privacy

Making and saving video recordings can infringe on personal rights! Always observe the applicable legal and labeling requirements for the placement and operation of video components!

4 Environment

**Consider the protection of the environment!**

Used electric and electronic devices must not be disposed of with household waste.

- The device contains valuable raw materials that can be recycled. Therefore, dispose of the device at the appropriate collecting facility.

4.1 ABB devices

All packaging materials and devices from ABB bear the markings and test seals for proper disposal. Always dispose of the packing materials and electric devices and their components via an authorized collection facility or disposal company.

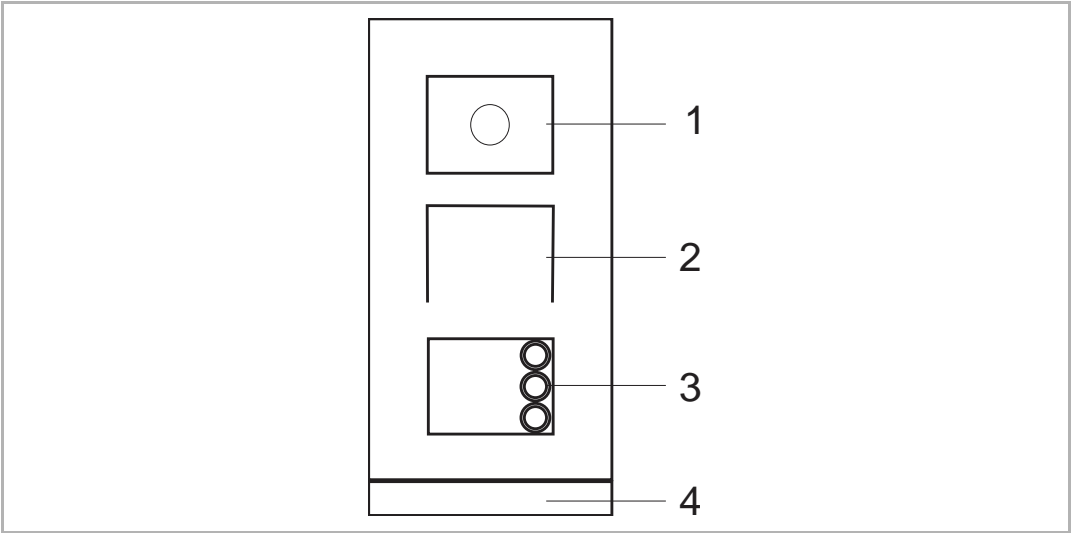
ABB products meet the legal requirements, in particular the laws governing electronic and electrical devices and the REACH ordinance.

(EU-Directive 2012/19/EU WEEE and 2011/65/EU RoHS)

(EU-REACH ordinance and law for the implementation of the ordinance (EG) No.1907/2006)

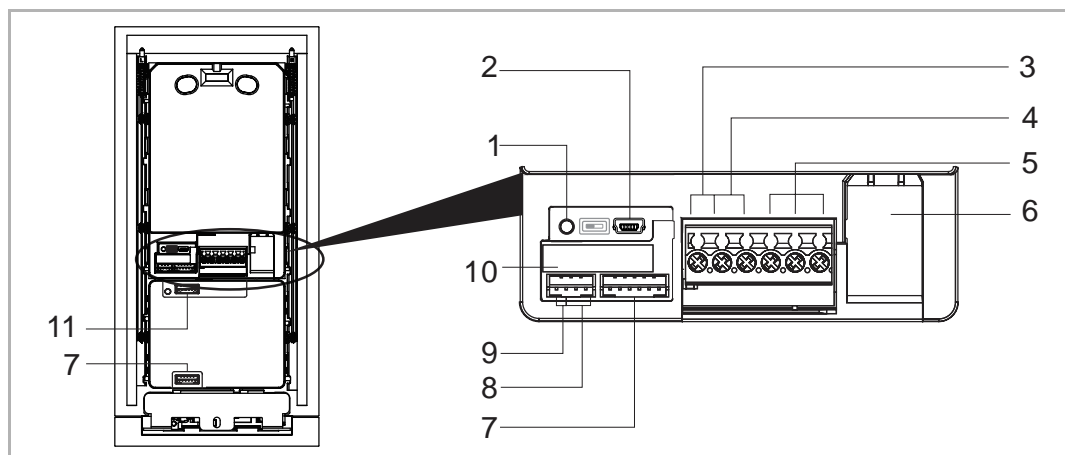
5 Product description

5.1 Control elements








No.	Function
1	Camera
2	Speaker and microphone integration
3	Round pushbutton
4	End strip

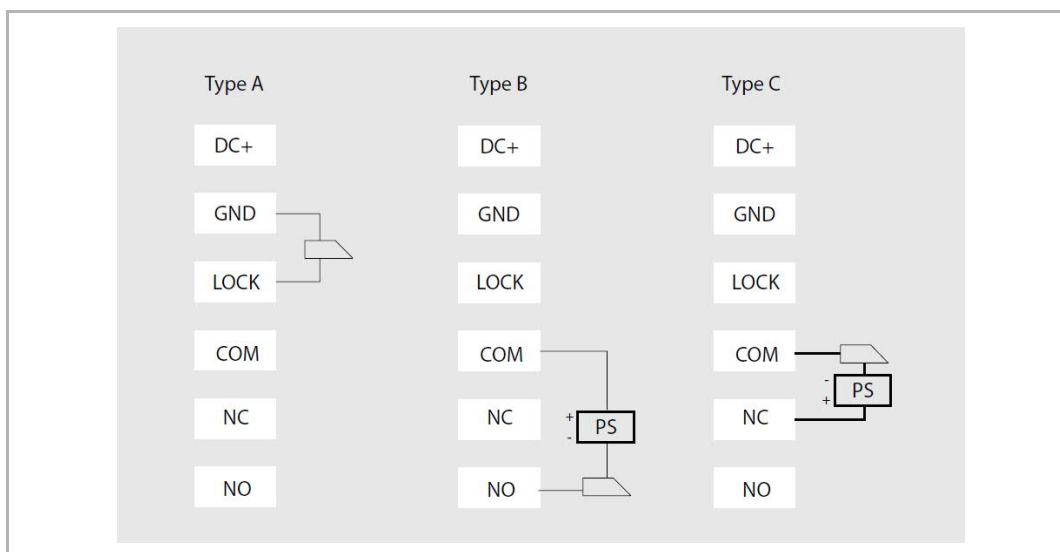
5.2 Interfaces



No.	Function
1	Reset button
2	Micro USB update connector
3	Plug-in clamps (DC+...GND) for standalone power supply
4	Plug-in clamps (LOCK...GND) for door opener
5	Plug-in clamps (COM...NC...NO) for floating output, door opener
6	LAN (PoE)
7	Connector for next module
8	Connector for exit button
9	Connector for the sensor used for door status detection
10	Connector for 5" display module
11	Connector for previous module

5.3 Locks and connections

Lock type	Pic	Operation type	Voltage	Wiring type
Electrical strike lock, 12V		Power on to open	12 VDC/AC	Type A Type B
Electrical strike lock, 24V		Power on to open	24 VDC/AC	Type B
Electrical rim lock, 12 V		Power on to open	12 VDC	Type A Type B
Electrical mortise lock		Power off to open	12 VDC	Type C
Magnetic lock		Power off to open	12/24 V DC	Type C



6 Technical data

Designation	Value
Rating voltage	24 V DC
Operating voltage range	20-27 V DC
Rating current	27 V DC, 300 mA 24 V DC, 330 mA
Operating temperature	-40 °C...+55 °C
Product dimensions	135mm x 276.9 mm x 17.6 mm
Camera type	CMOS
Camera viewing angle	130°
Resolution ratio	HD (1280 x 720 pixel)
Power supply for door opener	18 V, 4 A impulse, max. 250 mA holding
Floating output for door opener	230 V AC, 3 A 30 V DC, 3 A
Video codec	H.264
Audio codec	G.711
IP level	IP 54
IK level	IK 07
Network connection standard	IEEE 802.3, 10Base-T/100Base-TX, auto MDI/MDI-X

7 Mounting/Installation

**Warning**

Electric voltage!

Dangerous currents flow through the body when coming into direct or indirect contact with live components.

This can result in electric shock, burns or even death.

- Disconnect the mains power supply prior to installation and/or disassembly!
- Permit work on the 100-240 V supply system to be performed only by specialist staff!

7.1 Requirement for the electrician

**Warning**

Electric voltage!

Install the device only if you have the necessary electrical engineering knowledge and experience.

- Incorrect installation endangers your life and that of the user of the electrical system.
- Incorrect installation can cause serious damage to property, e.g. due to fire.

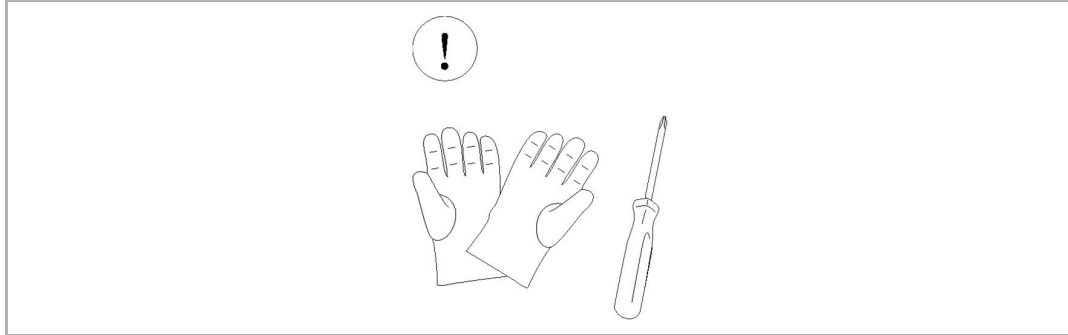
The minimum necessary expert knowledge and requirements for the installation are as follows:

- Apply the "five safety rules" (DIN VDE 0105, EN 50110):
 1. Disconnect
 2. Secure against being re-connected
 3. Ensure there is no voltage
 4. Connect to earth and short-circuit
 5. Cover or barricade adjacent live parts.
- Use suitable personal protective clothing.
- Use only suitable tools and measuring devices.
- Check the type of supply network (TN system, IT system, TT system) to secure the following power supply conditions (classic connection to ground, protective grounding, necessary additional measures, etc.).

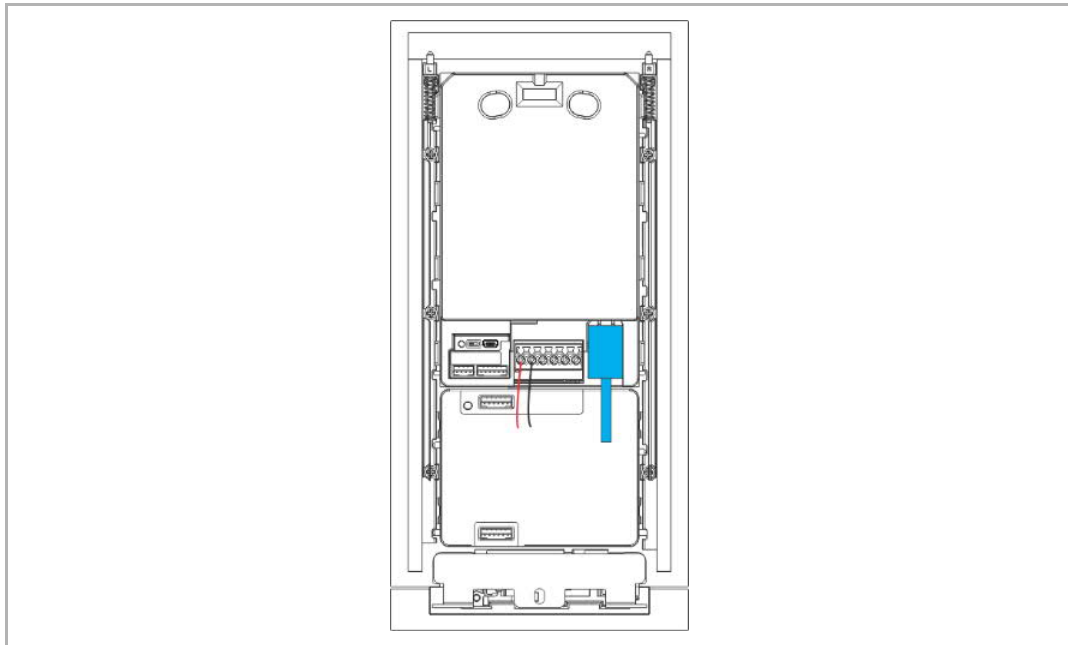
7.2 Mounting

7.2.1 Preparation

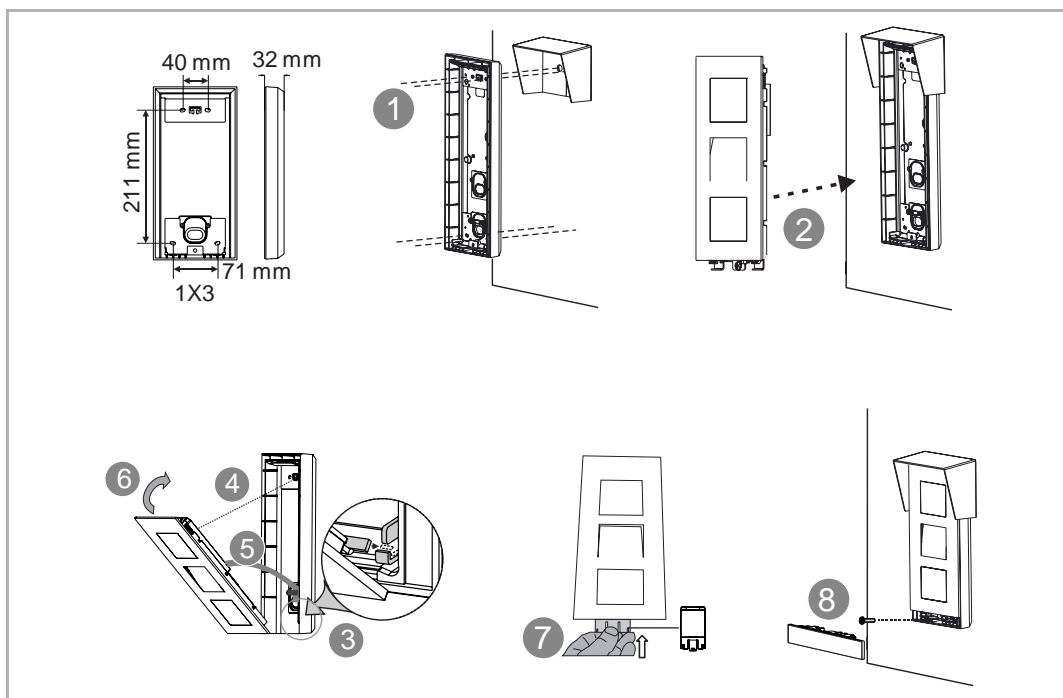
Use gloves to protect yourself against cuts.



7.2.2 Wiring

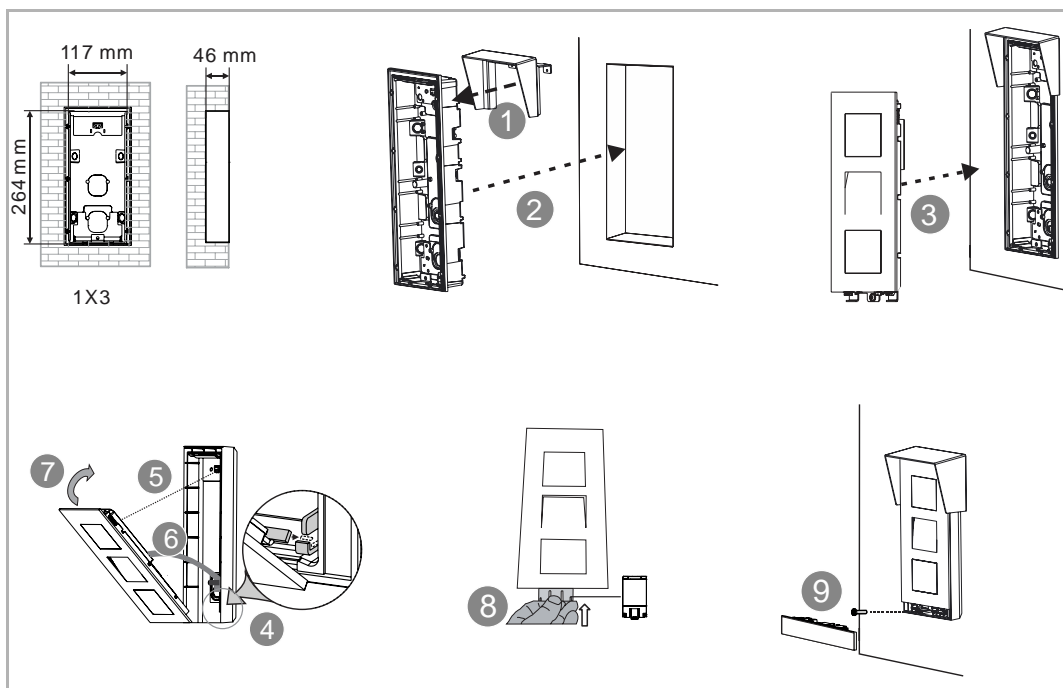


7.2.3 Surface-mounted installation

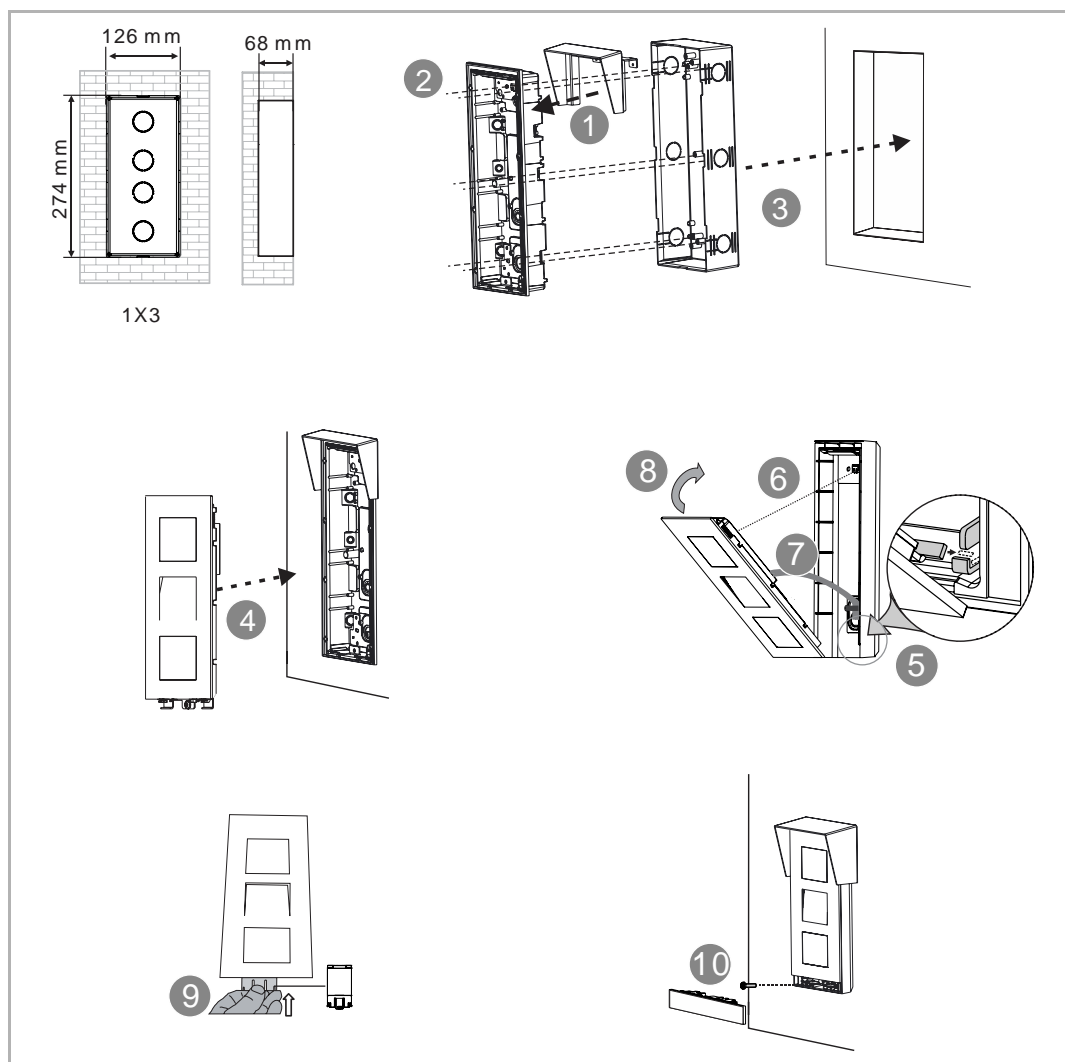


7.2.4 Flush-mounted installation

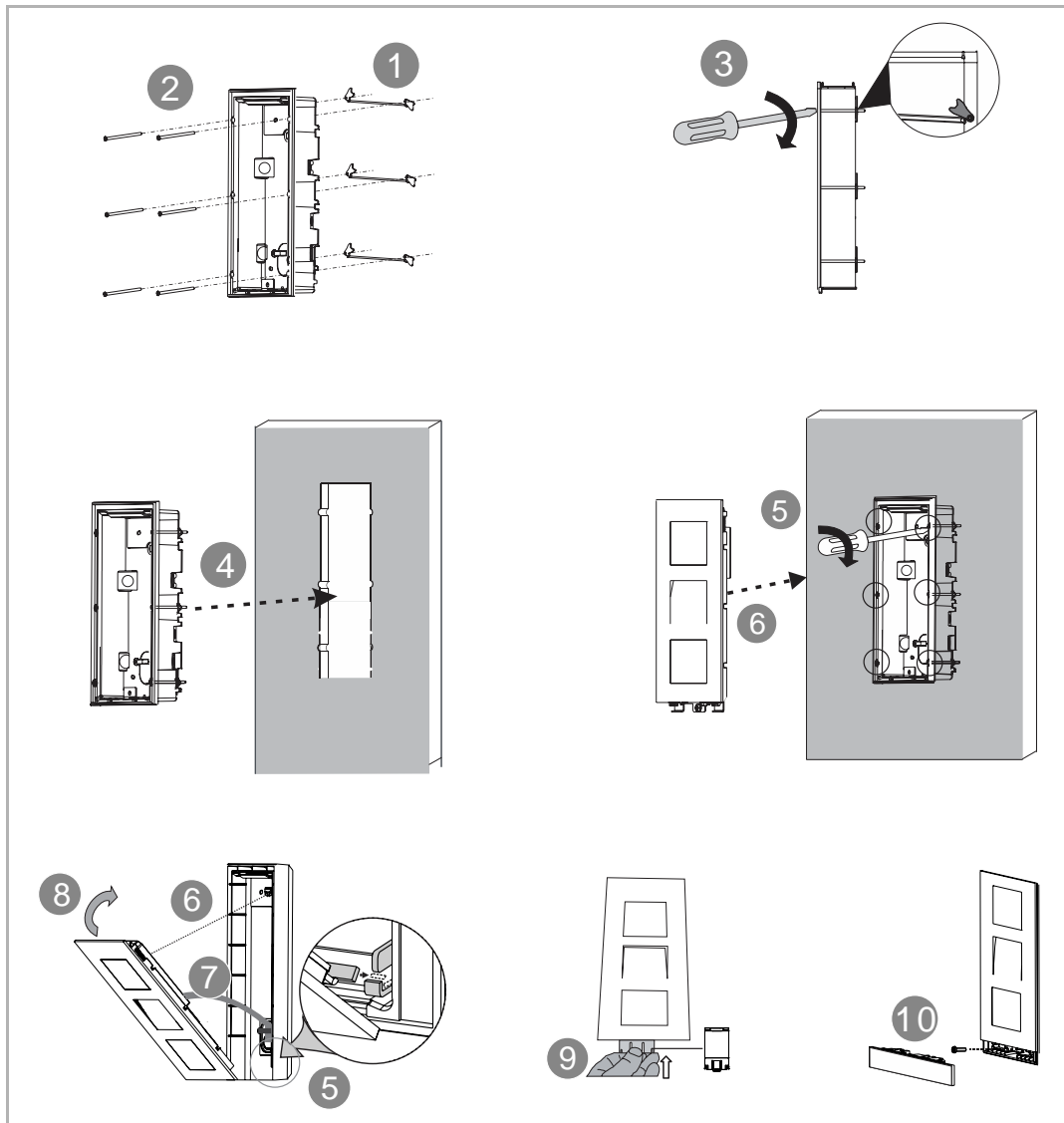
1. Flush-mounted without pre-installation box



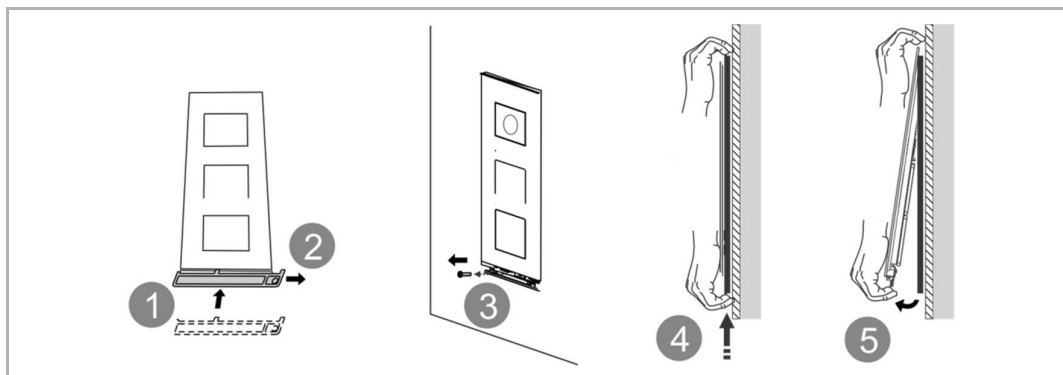
2. Flush-mounted with pre-installation box



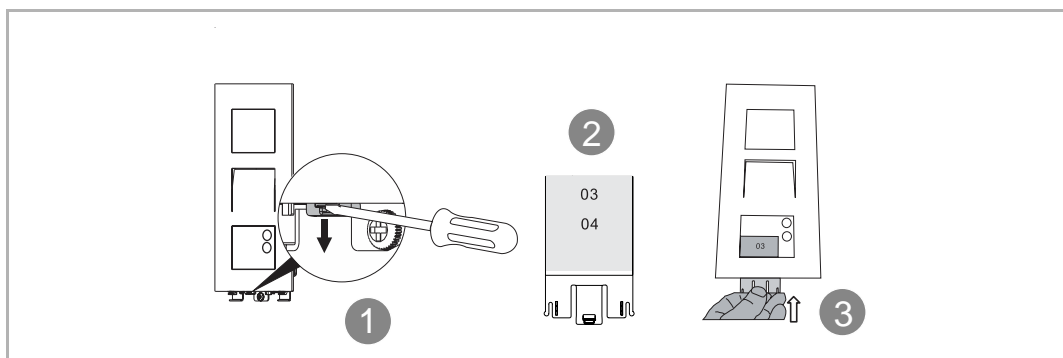
7.2.5 Cavity wall installation



7.2.6 Dismantling



7.2.7 Replacing the nameplate



Installation situations



Note

The following installation situations must be avoided without fail to ensure picture quality:

- Direct light
- Direct sunlight
- Extremely bright picture background
- Highly reflective walls on the opposite side of the door station
- Lamps or direct light sources

8 Commissioning

The outdoor station must be configured via the indoor station.

Step1: Outdoor station enters engineering mode

- Power on the outdoor station, wait a while until all 3 LED indicators go out.
- Hold the first button on the outdoor station for 10 s until all 3 LED indicators start to flash.

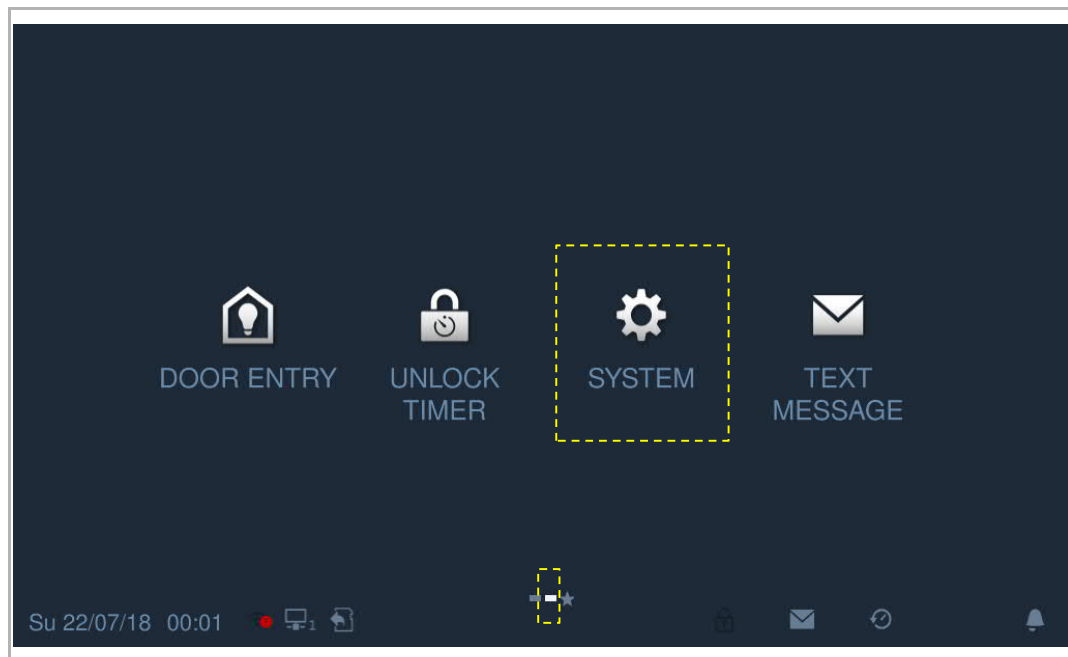


Tip

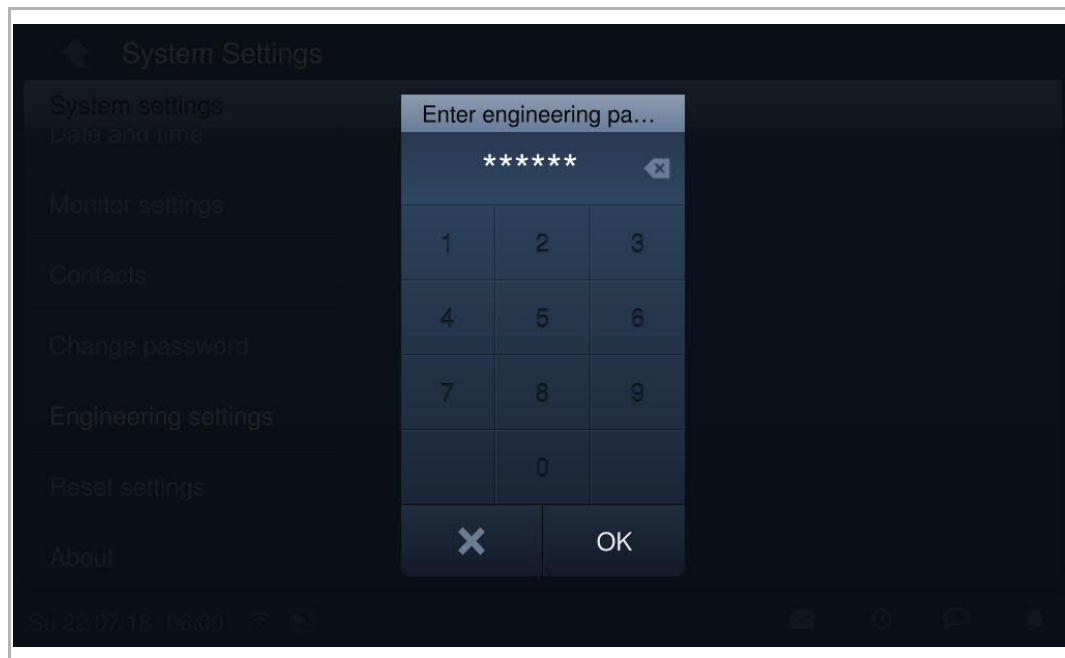
The outdoor station will quit engineering mode after 5 minutes.

Step 2: Indoor station enters engineering mode

On the extra screen on the indoor station, click "System" to enter the settings screen.



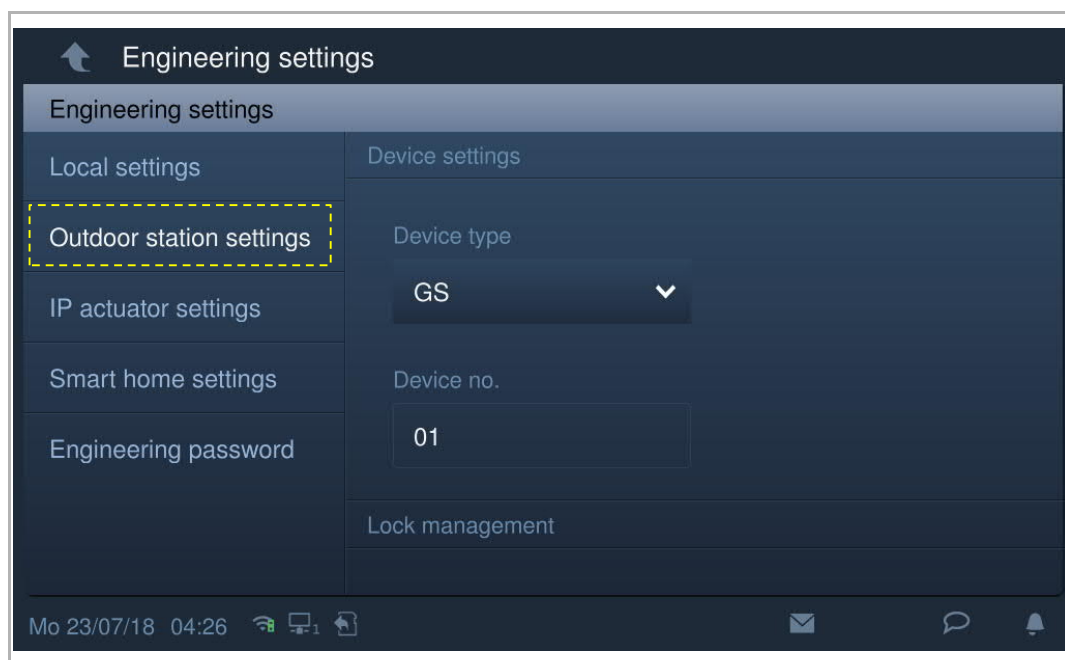
On the "System settings" screen, click "Engineering settings", enter the engineering password (default is 345678) to enter the settings page.



Step3: Indoor station configures outdoor station

On the "Engineering settings" screen, click "Outdoor station settings" to configure the outdoor station.

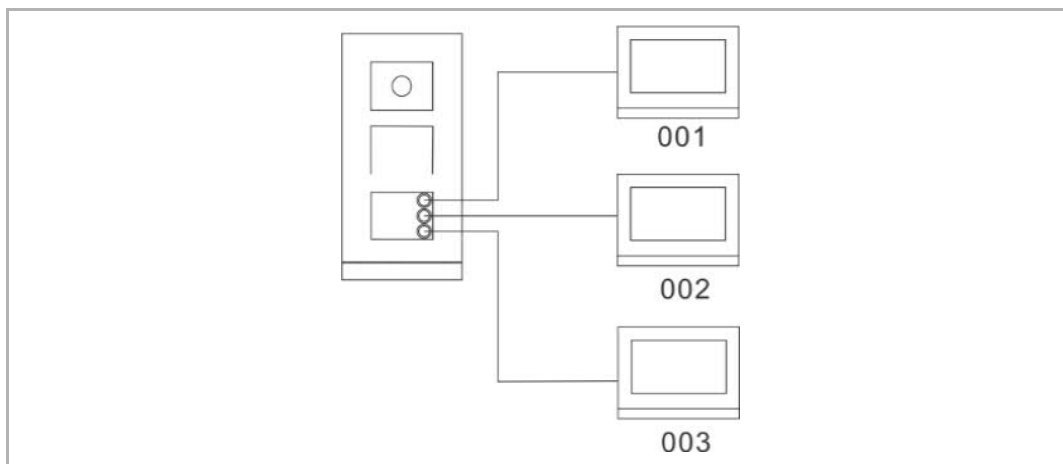
Please refer to the product manual for the IP touch 7".



9 Operation

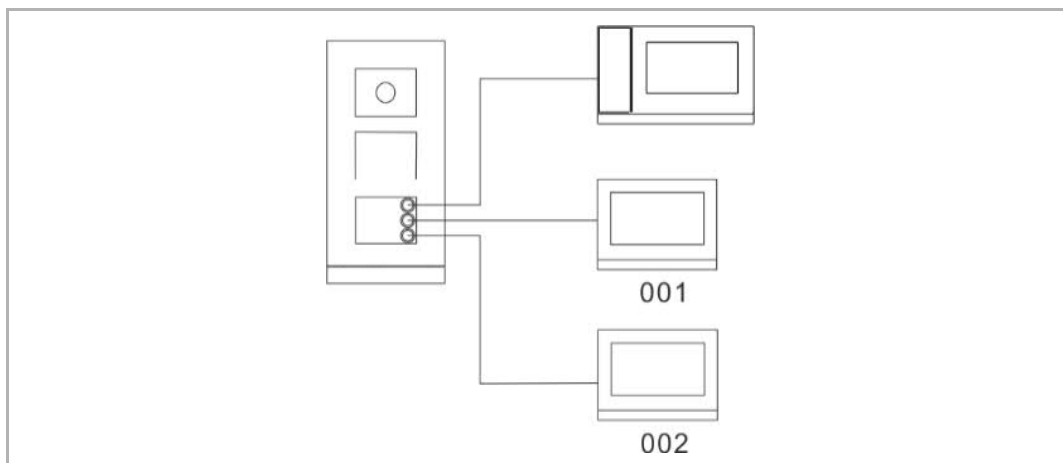
9.1 Calling a resident

Press the button to start a call (default) and press again to restart the call.



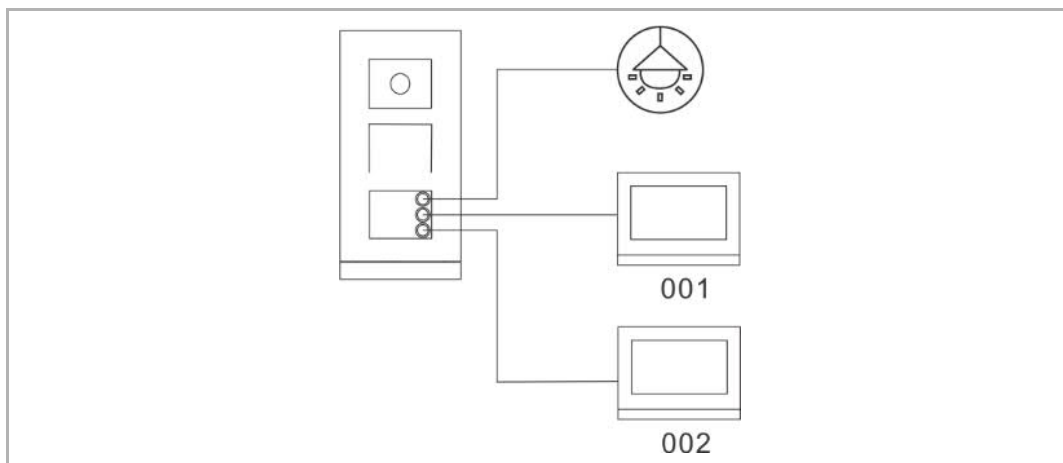
9.2 Calling the guard unit

If the outdoor station has been configured via the indoor station, we can press the pushbutton to call the designated guard unit. Please refer to the product manual for the IP touch 7".



9.3 Turn on the light

If the outdoor station is configured by the indoor station, we can press the pushbutton to switch on the light connected to the IP actuator. Please refer to the product manual for the IP touch 7".



10 FCC

This device complies with Part 15 of the FCC Rules. Operation is subject to the following two conditions: (1) this device may not cause harmful interference, and (2) this device must accept any interference received, including interference that may cause undesired operation.

Only operate the device in accordance with the instructions supplied.

Changes or modifications to this unit not expressly approved by the party responsible for compliance could void the user's authority to operate the equipment.

NOTE: This equipment has been tested and found to comply with the limits for a Class B digital device, pursuant to part 15 of the FCC Rules. These limits are designed to provide reasonable protection against harmful interference in a residential installation. This equipment generates, uses and can radiate radio frequency energy and, if not installed and used in accordance with the instructions, may cause harmful interference to radio communications. However, there is no guarantee that interference will not occur in a particular installation. If this equipment does cause harmful interference to radio or television reception, which can be determined by turning the equipment off and on, the user is encouraged to try to correct the interference by one or more of the following measures:

- Reorient or relocate the receiving antenna.
- Increase the separation between the equipment and receiver.
- Connect the equipment into an outlet on a circuit different from that to which the receiver is connected.
- Consult the dealer or an experienced radio/TV technician for help.

11 Cyber security

11.1 Disclaimer

H81381P.-. products are designed to be connected and to communicate information and data via a network interface, which should be connected to a secure network. It is customer's sole responsibility to provide and continuously ensure a secure connection between the product and customer's network or any other network (as the case may be) and to establish and maintain appropriate measures (such as but not limited to the installation of firewalls, application of authentication measures, encryption of data, installation of antivirus programs, etc.) to protect the H81381P.-. product, the network, its system and interfaces against any kind of security breaches, unauthorized access, interference, intrusion, leakage and/or theft of data or information. ABB Ltd and its affiliates are not liable for damages and/or losses related to such security breaches, unauthorized access, interference, intrusion, leakage and/or theft of data or information.

Although ABB provides functionality testing on the products and updates that we release, you should institute your own testing program for any product updates or other major system updates (to include but not limited to code changes, configuration file changes, third party software updates or patches, hardware change out, etc.) to ensure that the security measures that you have implemented have not been compromised and system functionality in your environment is as expected.

11.2 Performance and service

Network performance

Type	Value
Ethernet	24 Mbps (37449 packets/sec)
ARP	12 Mbps (18724 packets/sec)
ICMP	22 Mbps (34328 packets/sec)
IP	22 Mbps (34328 packets/sec)

Port and service

Port	Service	Purpose
5070	UDP	To be used by SIP client.
7777	TCP/UDP	To be used for device management.
10777	TLS	Secure channel for device management
7005	TCP	To be used for connectivity detection when this feature is enabled.
8887	TCP	To be used for firmware update.

11.3 Deployment guideline

All devices need to work in safe mode by default and. all devices in one system shall be signed by a public CA at commissioning stage, normally management software works as CA.

It's suggested that compatible mode only to be used when device needs to communicate with previous generation products. In this mode, data transmission between devices are not encrypted, it may lead to data leaks and has the risk of being attacked.

11.4 Upgrading

Device supports firmware updates via management software.

11.5 Backup/Restore

None.

11.6 Malware prevention solution

The H81381P.-. device is not susceptible to malware, because custom code cannot be executed on the system. The only way to update the software is by firmware upgrades. Only firmware signed by ABB can be accepted.

11.7 Password rule

The user must change the engineering password when accessing the engineering settings for the first time. This engineering password must not include continuously increasing or decreasing numbers (e.g. 123456, 654321), and three consecutive identical numbers are similarly not permitted (e.g. 123444, 666888).

We reserve the right to at all times make technical changes as well as changes to the contents of this document without prior notice.

The detailed specifications agreed to at the time of ordering apply to all orders. ABB accepts no responsibility for possible errors or incompleteness in this document.

We reserve all rights to this document and the topics and illustrations contained therein. The document and its contents, or excerpts thereof, must not be reproduced, transmitted or reused by third parties without prior written consent by ABB.



Contact us

ABB (United Arab Emirates)
Industries(L.L.C)
P.O.Box 11070 Dubai-UAE
T : +971 4 3147 586
F : +971 4 3401 541

ABB (Turkey) Elektrik San.AS
ABB Elektrik Sanayi AS. Organize
Sanayi Bolgesi 2 Cadde
No: 16 Y. Dudullu-Istanbul
T : +90 216 528 2281
F : +90 216 528 2945

ABB (Thailand) Ltd.
161/1 SG Tower, 1st-4th Floor, Soi
Mahadlekluang 3, Rajdamri Road,
Lumpini, Pathumwan Bangkok
10330, Thailand
T : +66 2 6651 000
F : +66 2 6651 043

ABB (Korea) Ltd.
Oksan Bldg, 10th Fl. 157-33
Samsung-dong, Gangnam-gu,
135-090, Seoul, Korea
T : +82 2 5283 177
F : +82 2 5282 350

ABB Global Marketing - Lebanon
Down Town, Beirut, ebanon
T : +961 1983 724/5
F : +961 1983 723

ABB (India) Ltd.
Plot No.1, Sector-1B,
I.I.E.SIDCUL,
Haridwar-249403.India
T : +91 133 423 5447
F : +91 133 423 5449

ABB Australia Pty Ltd.
601 Blackburn Road
3168, Notting Hill, Victoria,
Australia
T : +61 3 8577 7139
F : +61 3 9545 0415

www.abb.com

Approvals and Compliances

ABB (Vietnam) Ltd.
Km 9 National Highway 1A ,
Hoang Liet, Hoang Mai, Hanoi,
Vietnam
T : +84 4 3861 1010
F : +84 4 3861 1009

ABB (KSA) Electrical Industries Co. Ltd.
P.O.Box 325841, Riyadh 11371
T : +966 1 1484 5600
F : +966 1 1206 7609

ABB (Russia) Ltd.
3121 Wiring Accessories
30/1 bld.2, Obrucheva str. RU
T : +7 495 777 2220
F : +7 495 777 2220

ABB Malaysia Sdn Bhd
Block A, Level 2, Lot 608, Jalan
SS13/IK 47500 Subang Jaya
Selangor
T : +60 3 5628 4888
F : +60 3 5635 8200

ABB (Hong Kong) Ltd.
3 Dai Hei Street, Tai Po Industrial
Estate, Tai po, Hong Kong
T : +852 2 9293 912
F : +852 2 9293 505

ABB Pte. Ltd.
2 Ayer Rajah Crescent,
Singapore 139935
T : + 65 6 7765 711
F : + 65 6 7780 222

Notice

We reserve the right to at all times make technical changes as well as changes to the contents of this document without prior notice. The detailed specifications agreed upon apply for orders. ABB accepts no responsibility for possible errors or incompleteness in this document.

We reserve all rights to this document and the topics and illustrations contained therein. The document and its contents, or extracts thereof, must not be reproduced, transmitted or reused by third parties without prior written consent by ABB

Error! Use the Home tab to apply Überschrift 1 to the text that you want to appear here.