

IDoorBell Fon

DP68

Quick Installation Guide

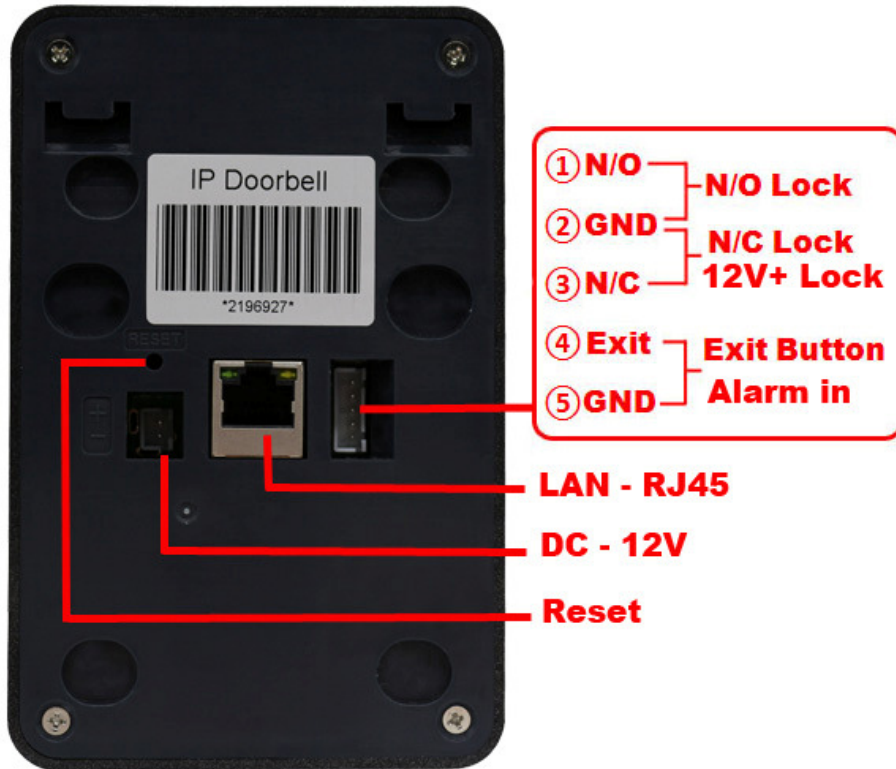


1. Interface

1. Front Panel



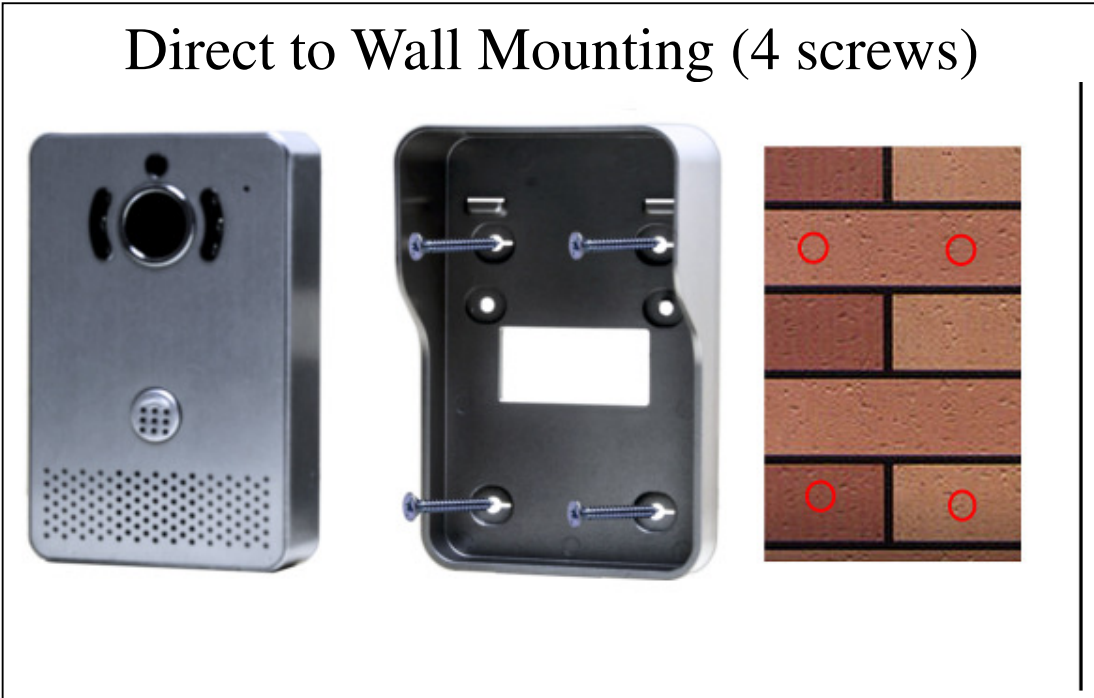
2. Back Panel



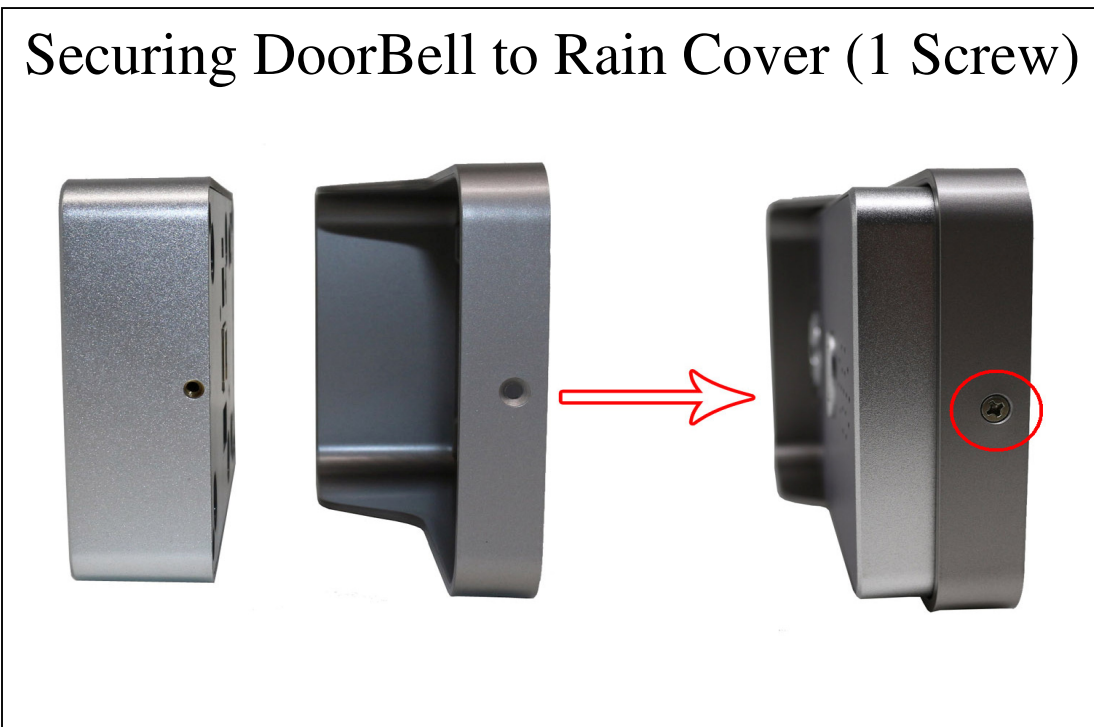
2. Doorbell Installation Options and Rain Cover Mounting

Note: For the best camera angle, position the camera around eye level.

Direct to Wall Mounting (4 screws)



Securing DoorBell to Rain Cover (1 Screw)



3. Mobile Phone App Instructions

1. Installing the Yoosee App

Scan the below QR Code.

OR – Search and download the Yoosee app from the iTunes App Store or Google Play.

OR - Visit <http://www.yoosee.co> to download.

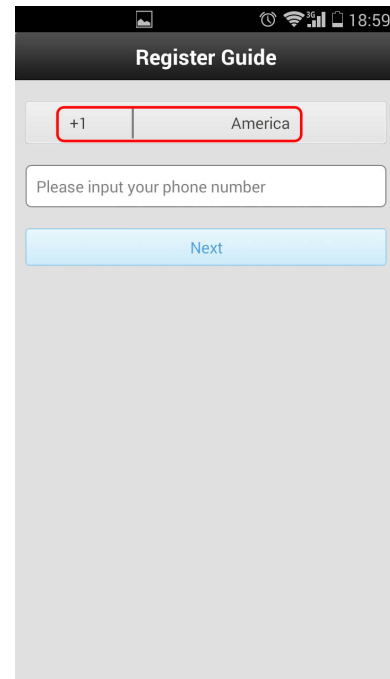
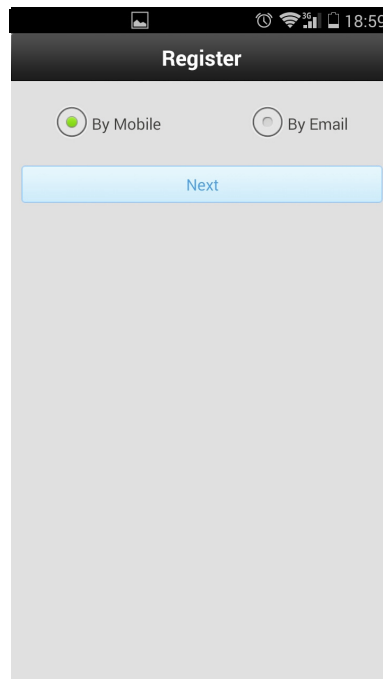
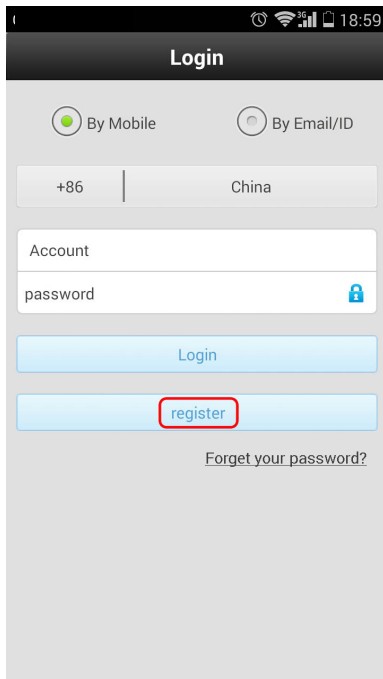
iOS



Android



2. Registering and logging to Yoosee.



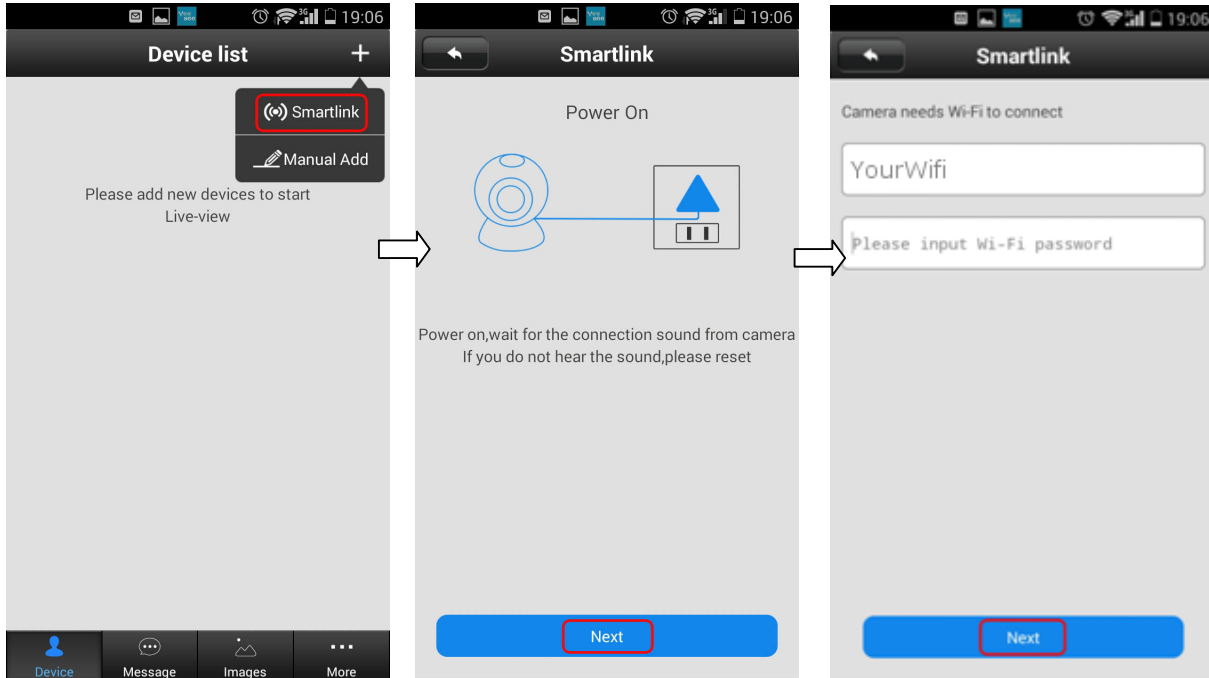
1. After downloading and installing the app, open it and tap on the "register button.

2. Choose to register by mobile phone or by email.

3. If registering by Mobile phone, please make sure you choose your country right to receive code.

4. Network Configuration

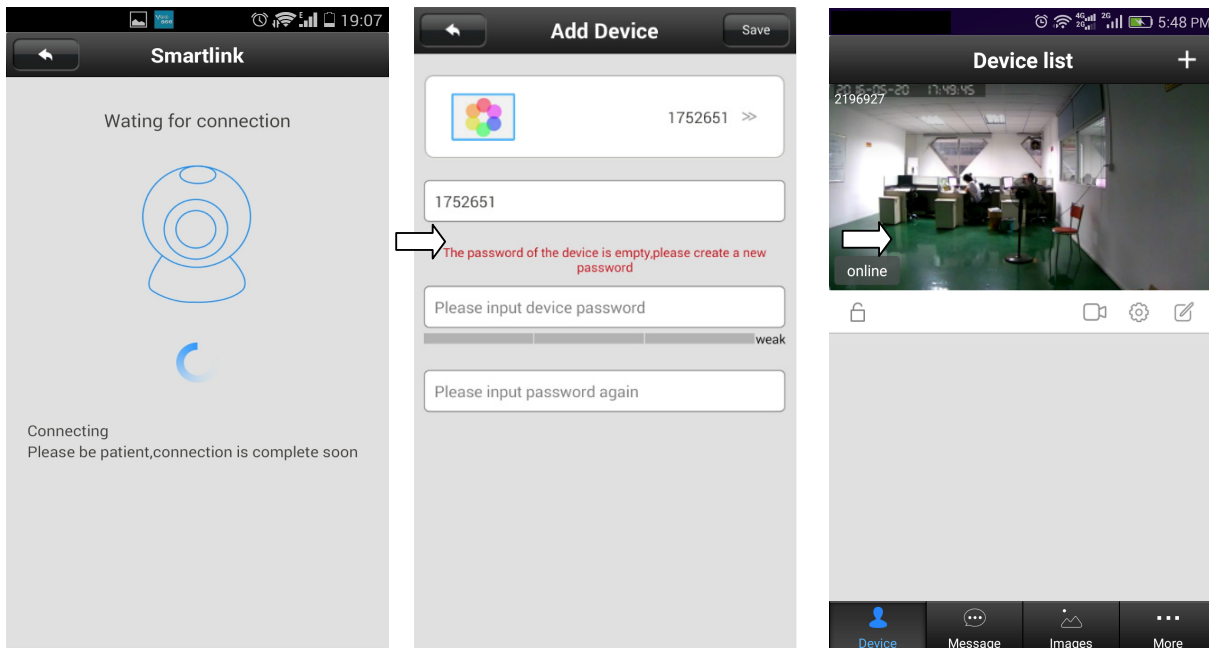
Wirelessly Link your Device to your Yoosee App on the same Network



1. Open the software. Tap on “+” on the top right and choose “Smartlink”.*
2. Follow the on-screen instruction. Click “NEXT” when finished.
3. Input Wifi password and click “NEXT”. **

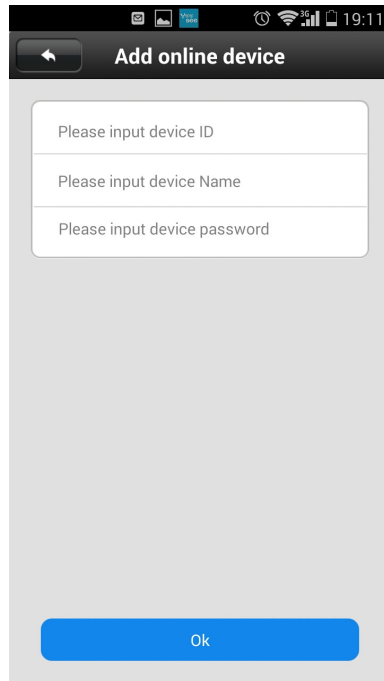
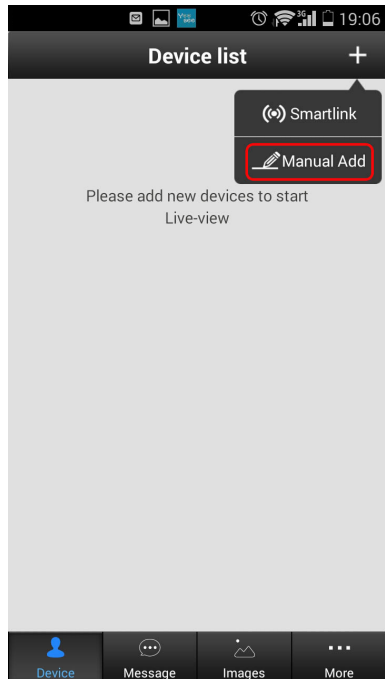
*Be sure to enable Smartlink within 5 minutes of powering on your IDoorBell Fon

**You must connect to the same WiFi network as your IDoorBell Fon from your smartphone or tablet to Smartlink



4. Wait for the WiFi connection to complete.
5. Setup a password for your DoorBell. Tap Save.
6. After setting up your password, the device list will appear. Click on your device to view live video.

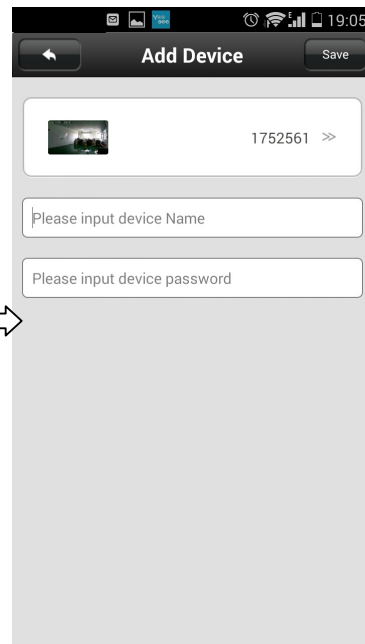
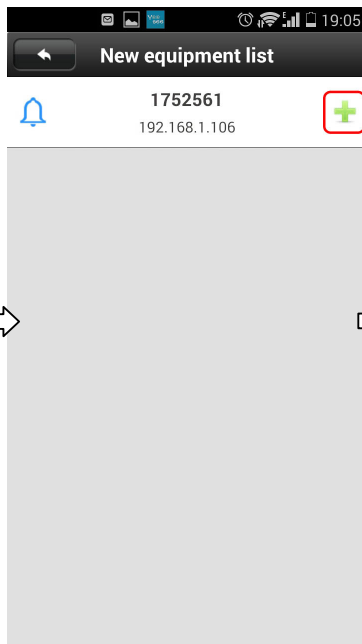
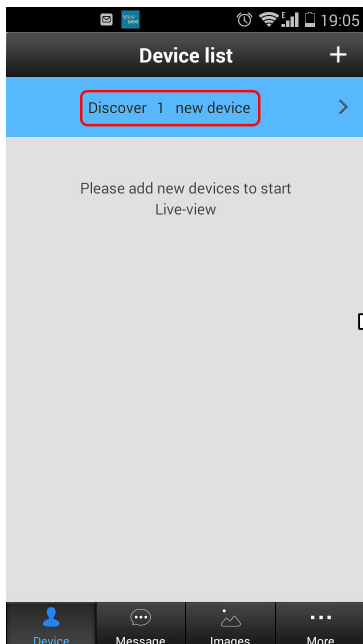
Remotely Link your Device to your Yoosee App



1. Open the software. Click on “+” on the top right and choose “Manual Add”.

2. Input the device ID, name and password and tap the “Ok” button.

Link your Device to your Yoosee App over LAN

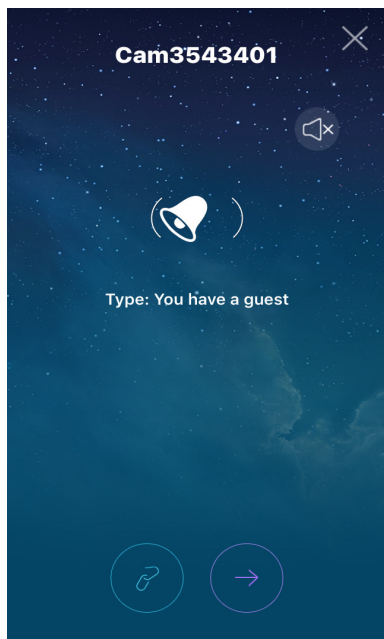


1. Open the Yoosee app. Tap on “Discover 1 new device”

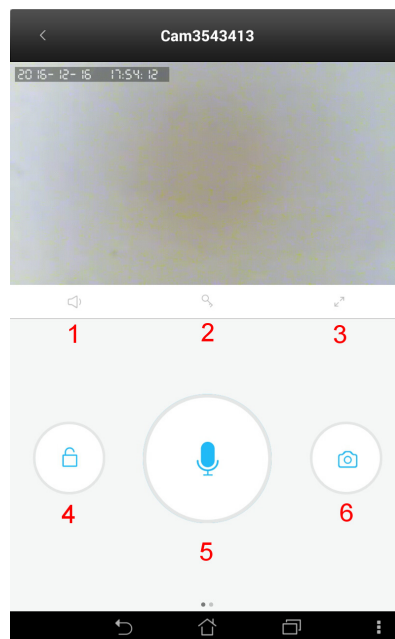
2. Tap “+”

3. Input device name and password and tap the “Save” button on the top right.

5. Incoming Call



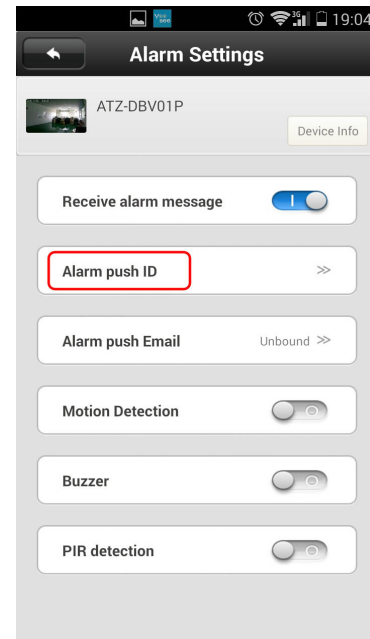
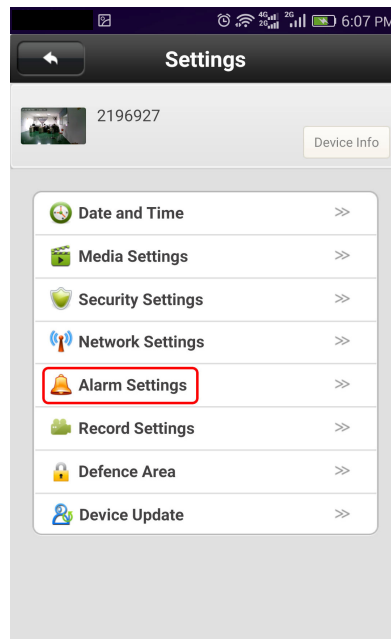
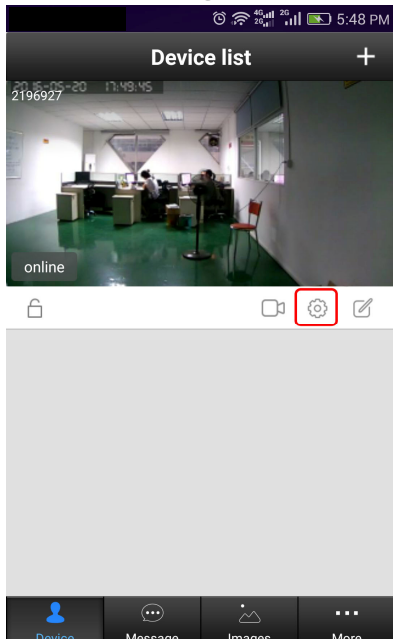
- Press the right button to answer.
- Press the left button to disable push notification.
- Press the “X” button to ignore the call.



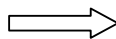
1. Mute/unmute speaker
 2. Unlock door
 3. Landscape mode.
 4. Enable/disable protection mode
 5. Mute/unmute microphone
 6. Take snapshot
- *Press the back button or home button on your to end call.

6. Security Protection

1. Alarm Settings



1. Tap on the “settings” icon



2. Choose Alarm Settings



3. Turn push notifications on or off and register new phone numbers or emails.

Alarm Settings:

Receive alarm message: On by default. If off, users cannot receive messages and alarm push.

Alarm push ID: This is set to the initial registration phone number. Supports up to five accounts.

Alarm push Email: Set an email to receive calls and snapshots.

Motion Detection: Disabled.

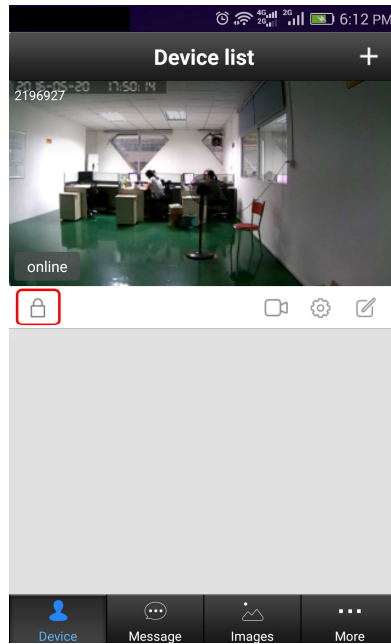
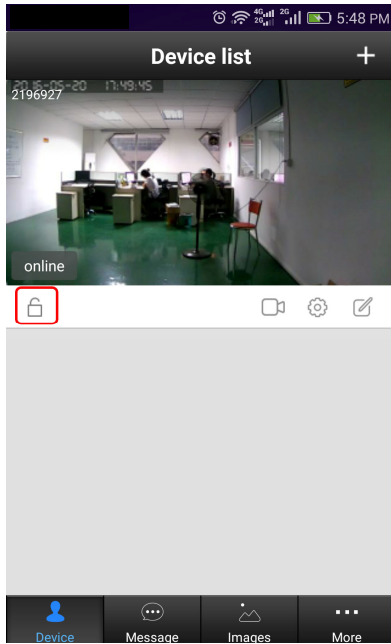
Buzzer: Closed by default. It will send out the alarm when the buzzer is open.

PIR (Human Infrared Detection): Not available.

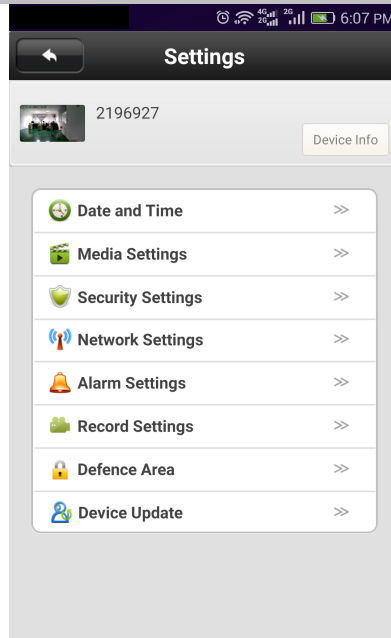
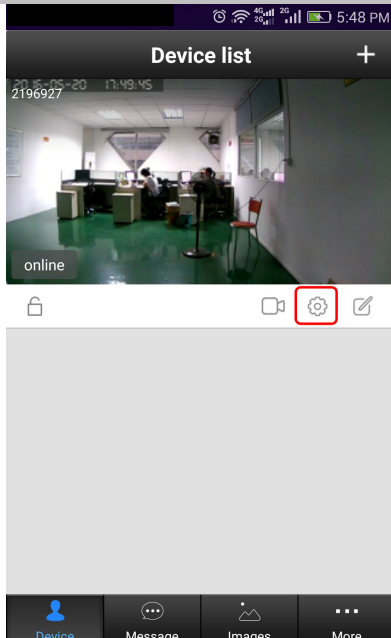
2. Protection and Removal

Unlock Protection Mode: Your mobile phone will no longer receive alarms.

Protection Mode: Your mobile phone will receive alarms.



7. Other Information



Device Info: Display the current firmware information of the device.

Date and Time: Set device time.

Media Settings: Set video image format (N/P) and image reversal.

Security Settings: Modify admin password.

Network Settings: Switch between LAN and WiFi network.

Alarm Settings: Configure the door phone alarm information.

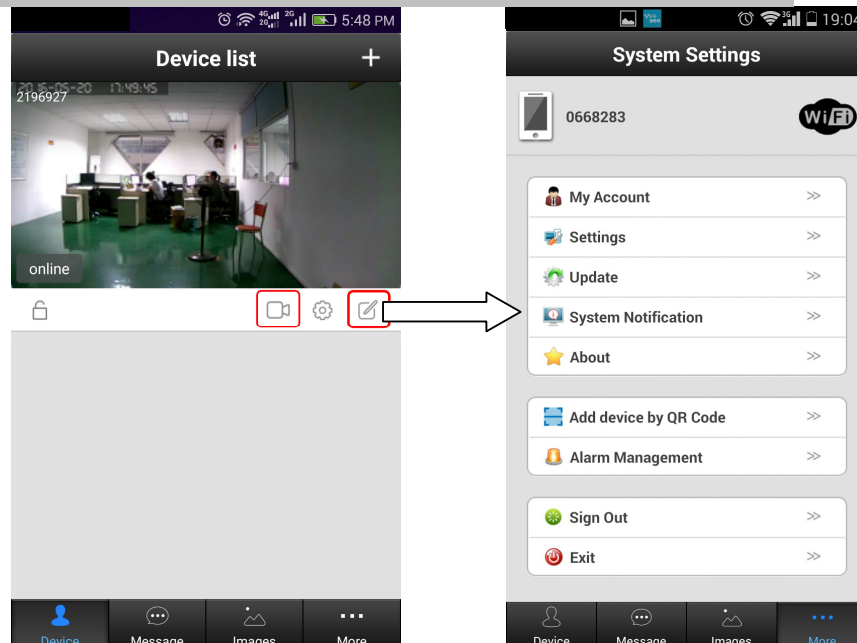
Record Settings: Set the recording mode (requires SD card).

Defence Area: Not available.

Storage Setting: Check SD card information.

Device Update: Check for device firmware updates.

8. App Function Introduction



Playback: Play SD card recordings.

Edit: Edit device name and password.

Device: Display the device list.

Message: Record visitor and alarm messages.

Image: Record the screenshot.

More:

My Account: Check and configure information about the current account, modify the account password.

Settings: Configure alarm/call rings, push notifications, and automatic start options.

Update: Check for updates.

System Notification: Important system notification

About: App description and version

Sign Out: Sign out of the current account.

Exit: Exit the app.

9. Indoor Chime

1. 433MHz
2. Learning Code
3. Distance: 30-80m
4. 52 Different Chimes

Volume Control

Music Switch

LED Indicator



Pairing Program Instruction

1. Cycle through and select your preferred chime before pairing by pressing the music switch.
2. Activate Pairing
 - a. Press the volume button and music button at the same time.
 - b. Press the call button on your IDoorBell within 5 seconds.
 - c. Selected chime will play if successful.
 - d. Repeat steps a through c for additional chime modules.
3. To reset and clear the pairing, hold the music button for 5 seconds

10. Main Specification

Chipset	Hi 3518E
WiFi	One-Key WiFi Connection
Indoor Bell	433MHz, Learning Code, Distance: 80m
Storage	Support Max. 64GB TF Card
Resolution	1.0MP - 720P (1280*720), VGA (640*480), QVGA (320*240)
Audio	Full-duplex Audio, G.711A
Alarm Motion Detection	PIR (human body infrared sensor detection)
Visual Angle	2.1mm Lens, 145° super wide angle
Night Vision	6pcs LED Lights, IR 3m, IR-Cut, no Color Change
Support Protocol	TCP/IP, UDP, SMTP, DHCP, UPnP, P2P, ONVIF
Item Size (L x W x H)	134 x 87 x 29mm
Certificate	ISO, CE, FCC, RoHS