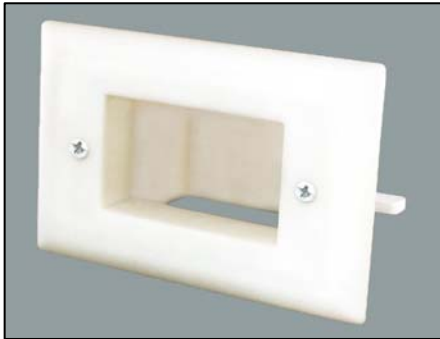


# Easy Mount Recessed Low Voltage Cable Plates 45-0008 & 45-0009



45-0008 & 45-0009 - Front View



45-0008 - Back View



Figure 1

The new Easy Mount Recessed Low Voltage Cable Plates are designed to be installed without “Low Voltage Mounting Plates” or “Old Work Mud Rings”. The mounting wings are molded into the Easy Mount wall plate (see Figure 2) and fasten tightly against the back of the drywall.

The new Slim Fit version is designed for use in concrete wall applications where the drywall is hung with 1x4 furring strips.

Use the Easy Mount Recessed Low Voltage Cable Plate to install low voltage cables behind your flat panel TV, (see Figures 3 & 4), your amplifier or other audio and video devices. The wall plate can be installed upright or upside down (see Figures 3 & 4 for upright installation).

These Recessed Cable Plates are Designed for Use with Low Voltage / Data Cables “ONLY”.

Do Not Run or Pull the TV Cord or Other Electrical Cords Inside the Drywall. National Electrical Code (NEC) Does Not Allow the Installation of the TV Power Cord or an Extension Cord Behind the Wall.

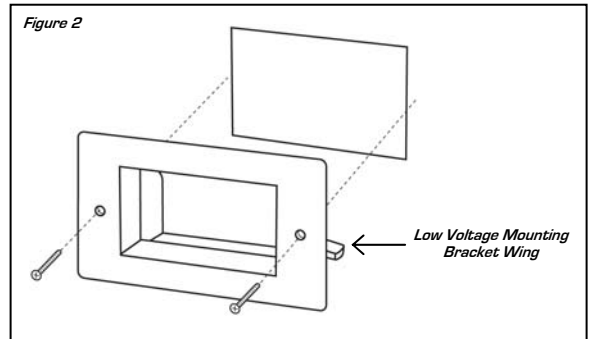


Figure 2

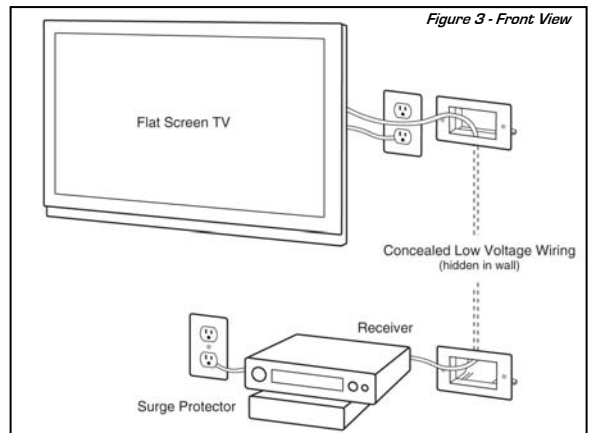


Figure 3 - Front View

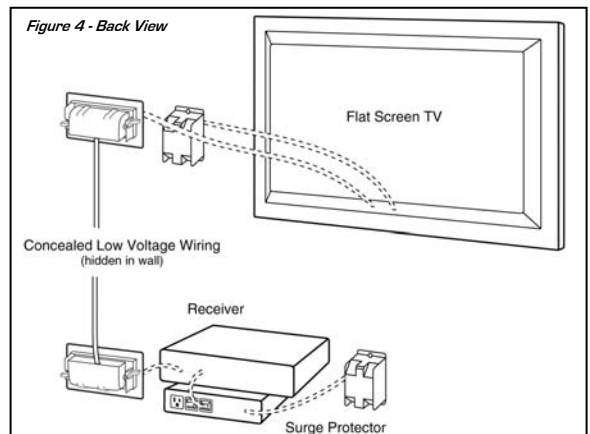


Figure 4 - Back View

Part #	Description
45-0008-BK	Easy Mount Recessed Cable Plate, Black
45-0008-IV	Easy Mount Recessed Cable Plate, Ivory
45-0008-LA	Easy Mount Recessed Cable Plate, Lite Almond
45-0008-WH	Easy Mount Recessed Cable Plate, White
45-0009-LA	Easy Mount Recessed Cable Plate, Slim Fit, Lite Almond
45-0009-WH	Easy Mount Recessed Cable Plate, Slim Fit, White

This product is patent protected by U.S. Patent number 7390964

RoHS Compliant



DataComm Electronics, Inc.  
6349 Peachtree Street  
Norcross, GA 30071-1725  
888.223.7977  
770.662.8205  
www.datacommelectronics.com