

Mid-Size Rough-In Bracket

for New Construction 45-0101

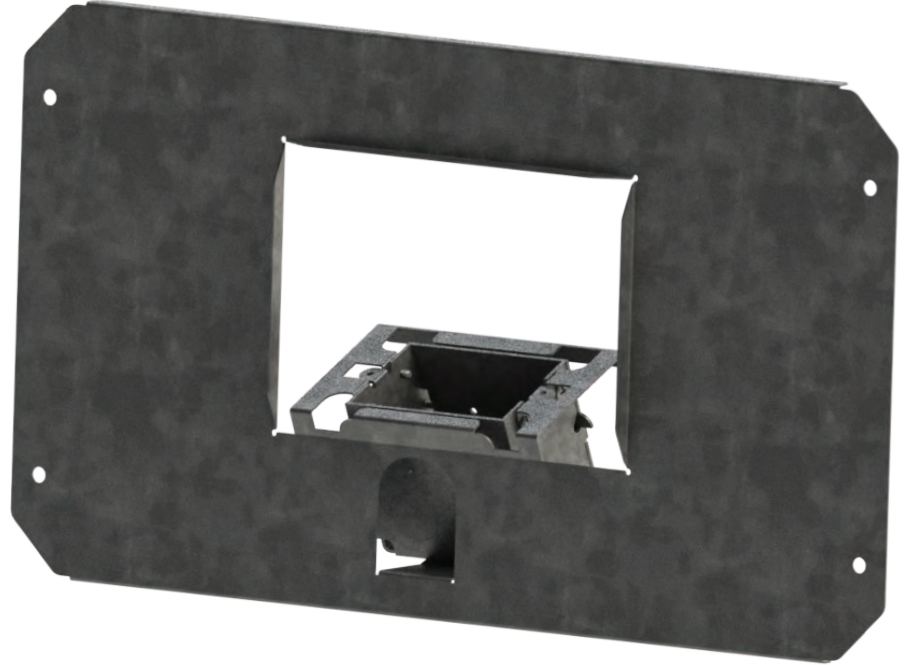


Commercial Grade

DataComm Electronics, Inc.

888.223.7977 / 770.662.8205 / www.DataCommElectronics.com

DataComm Electronics' Mid-Size Rough-In Bracket is designed for use in new construction applications. The Rough-In Bracket allows for pre-wiring with many of DataComm's Low Voltage and Power Cable Plates. It works well for both residential and commercial applications.



FEATURES

- Sturdy 22GA Galvanized Steel Construction
- Designed to be installed onto standard 16 inch on center metal or wood studs
- Steel Outlet Box* included:
 - ▶ 2 ¾" Single Gang
 - ▶ Contains 8 knockouts for conduit or armored cable mounting options
- Built-in mud ring for drywall
- Works well for both residential (15A) and commercial (20A) applications
- Reversible for receptacle placement on top or bottom
- Low profile design fits behind the industry's thinnest mounts, TV's and other wall mounted displays
- Conceal multiple A/V cables behind your HDTV or other display unit
- Quick and easy to install

Final Installation with Compatible Wall Plate (Part #45-0071-WH)



COMPATIBLE WALL PLATES

Use the Mid-Size Rough-In Bracket in conjunction with the Recessed Low Voltage Mid-Size Plate:

- ▶ with Duplex Receptacle, Part #45-0071-WH
- ▶ with Duplex Surge Suppressor, Part # 45-0081-WH
- ▶ with 20 Amp Duplex Receptacle, Part #45-0072-WH

Part Number	Description	Min. Order/Master Ctn.
45-0101	Mid-Size Rough-In Bracket	4/4



RoHS Compliant. *UL Listed Component.

Full-Size Rough-In Bracket

for New Construction 45-0102

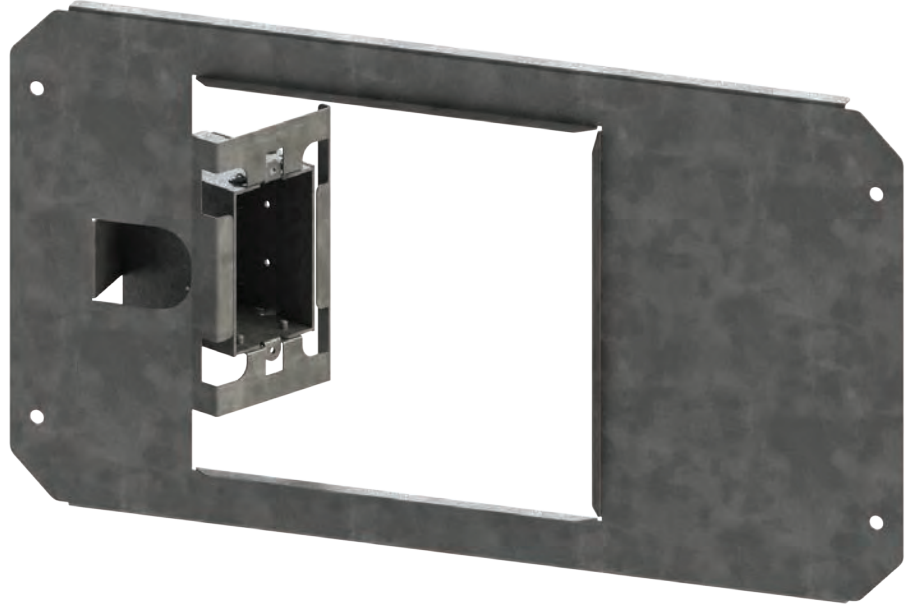


Commercial Grade

DataComm Electronics, Inc.

888.223.7977 / 770.662.8205 / www.DataCommElectronics.com

DataComm Electronics' Full-Size Rough-In Bracket is designed for use in new construction applications. The Rough-In Bracket allows for pre-wiring with many of DataComm's Low Voltage and Power Cable Plates. It works well for both residential and commercial applications.



FEATURES

- Sturdy 22GA Galvanized Steel Construction
- Designed to be installed onto standard 16 inch on center metal or wood studs
- Steel Outlet Box* included:
 - ▶ 2 ¾" Single Gang
 - ▶ Contains 8 knockouts for conduit or armored cable mounting options
- Built-in mud ring for drywall
- Works well for both residential (15A) and commercial (20A) applications
- Reversible for receptacle placement on left or right side
- Low profile design fits behind the industry's thinnest mounts, TV's and other wall mounted displays
- Conceal multiple A/V cables behind your HDTV or other display unit
- Quick and easy to install

Final Installation with Compatible Wall Plate (Part #45-0031-WH)



COMPATIBLE WALL PLATES

Use the Full-Size Rough-In Bracket in conjunction with the Recessed Low Voltage Media Plate:

- ▶ with Duplex Receptacle, Part #45-0031-WH
- ▶ with Duplex Surge Suppressor, Part # 45-0041-WH
- ▶ with 20 Amp Duplex Receptacle, Part #45-0032-WH

And the Expandable Media Box:

- ▶ with Duplex Receptacle, Part #45-0051-WH
- ▶ with Duplex Surge Suppressor, Part # 45-0061-WH
- ▶ with 20 Amp Duplex Receptacle, Part #45-0052-WH

Part Number	Description	Min. Order/Master Ctn.
45-0102	Full-Size Rough-In Bracket	4/4



RoHS Compliant. *UL Listed Component.