



DISCLAIMER AND LIMITATION OF LIABILITY

OTHER THAN THE LIMITED WARRANTY ABOVE, ECOLINK MAKES NO OTHER WARRANTY OR REPRESENTATION, AND HEREBY DISCLAIMS ANY AND ALL IMPLIED WARRANTIES, INCLUDING, WITHOUT LIMITATION, THE IMPLIED WARRANTIES OF NON-INFRINGEMENT, MERCHANTABILITY AND FITNESS FOR A PARTICULAR PURPOSE. YOU ACKNOWLEDGE THAT YOU ALONE HAVE DETERMINED THAT THE PRODUCT WILL SUITABLY MEET THE REQUIREMENTS OF THE INTENDED USE.

IN NO EVENT SHALL ECOLINK OR ANY OF ITS AFFILIATES BE LIABLE FOR ANY INCIDENTAL, SPECIAL, INDIRECT, CONSEQUENTIAL, OR MULTIPLE DAMAGES, INCLUDING BUT NOT LIMITED TO, LOST PROFITS, LOSS OR DAMAGE TO SOFTWARE OR DATA, OR DAMAGE TO EQUIPMENT ARISING OUT OF THE USE OF ANY PRODUCT, EVEN IF ECOLINK HAS BEEN ADVISED OF THE POSSIBILITY OF SUCH DAMAGES. FURTHER, IN NO EVENT SHALL THE LIABILITY OF ECOLINK OR ITS AFFILIATES EXCEED THE INDIVIDUAL PRICE OF THE PRODUCT ON WHICH LIABILITY IS ASSERTED.

By the act of use, setup or assembly of the product, you accept all resulting liability. If you as the purchaser or user are not prepared to accept the liability associated with the use of the product, you are advised to return the product immediately in new and unused condition to the place of purchase. Some states do not allow the exclusion or limitation of incidental or consequential damage, so the above limitations may not apply to you.

LIMITED WARRANTY

This limited warranty is provided by Ecolink Intelligent Technology ("Ecolink") to you as the original purchaser of the product. Ecolink warrants this product to be free from defects in material and workmanship for a period of one (1) year from the date of original purchase. The determination of whether the product is defective shall be made by Ecolink in its sole discretion with consideration given to the overall performance of the product. If Ecolink determines that any product is defective, Ecolink's sole obligation and your sole and exclusive remedy shall be that Ecolink will replace the product.

This warranty does not apply to damage caused by shipping or handling, or damage caused by accident, abuse, misuse, misapplication, ordinary wear, improper maintenance, failure to follow instructions or as a result of any unauthorized modifications. The foregoing limited warranty is and shall be in lieu of any and all other warranties, whether expressed or implied and of all other obligations or liabilities on the part of Ecolink. Ecolink neither assumes responsibility for, nor authorizes any other person purporting to act on its behalf to modify or to change this warranty, nor to assume for it any other warranty or liability concerning this product. It is recommended that the customer check their equipment on a regular basis for proper operation

RETURN POLICY

Please visit us at www.discoverecolink.com/return to view our return policy.

Z-Wave Plus™ Garage Door Tilt Sensor



Installation Guide



Product Overview

The accelerometer based tilt sensor remotely monitors garages, hatches, roll-up doors, or any other tilt surface. Verify doors are closed when you leave, and automate lights to turn on inside your home when you arrive, all from your computer, tablet or smart phone.

Features

- Quick installation, flush mount bracket with screws or tape
- Compatible with all Z-Wave Plus™ certified hubs & controllers
- Detects angle of a door and transmits open/close status
- Reports a tamper if the case is removed

Specifications

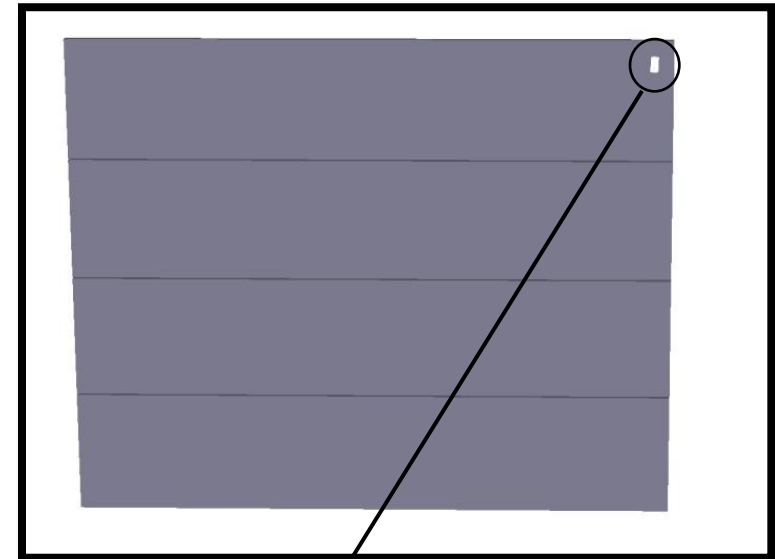
- For indoor use only
- Operating frequency: 908.42, 916 MHz
- Operating temperature: 0° – 49°C, 32° – 120°F
- Operating humidity 5-95% non-condensing
- 1 CR123A battery
- Battery Life: 5 years

Package contents

- 1 x Z-Wave Plus™ Tilt Sensor
- 1 x CR123A batteries
- 1 x Installation Guide
- 1x Accessory Pack
 - 1x Mounting Bracket
 - 1x Double Sided Adhesive Tape
 - 2x Mounting Screws
 - 1x Mounting Bracket Screw

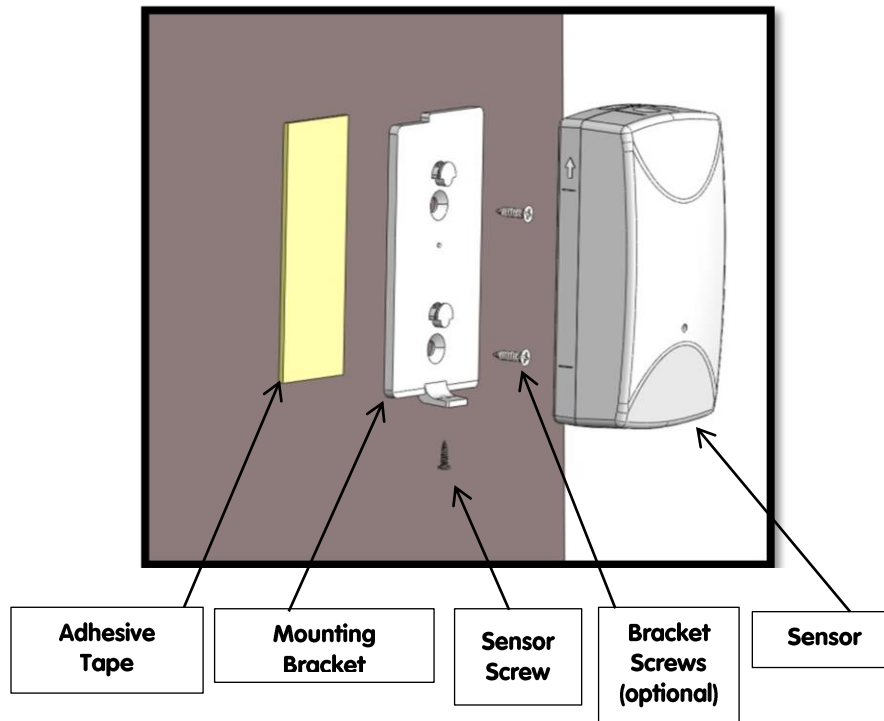
Installation Instructions

- (1) Identify location for Z-Wave Plus Tilt Sensor. It is very important that the Tilt sensor be located on the top section of a multi-panel garage door. This will be the first section to tilt when the door is opened and the last to move to the vertical position when closing.



IMPORTANT: The Tilt sensor must be located on the top panel AND have the arrow on the side of the sensor pointing UP in order to operate

- (2) Mount the Tilt sensor mounting bracket a clean dry surface with the sensor screw facing the floor. The bracket can be mounted by the screws of adhesive tape. Caution: Use of the screws is only recommended for garage doors that are thicker than the screws are long. Use the adhesive tape for any garage door that is thinner than the length of the provided screws.



- (3) Adhesive Tape Mounting: Make sure that the desired mounting location on the door is clean and dry. The adhesive tape can withstand the temperature and humidity conditions of a typical garage. However, it is recommended that the sensor be mounted when air or surface temperatures are not extreme. Installing the adhesive tape when the conditions are right promotes a good long-lasting adhesive bond between the bracket and the surface of the door. Peel back the outer layer of one side of the adhesive tape, stick the tape to the garage door and press firmly. Peel back the outer layer on the other side of the tape and press the mounting

bracket firmly onto the adhesive tape.

- (4) Screws Mounting: Place the mounting bracket in the desired position on the garage door. Use the mounting bracket as a template to mark the location of the screw holes with a pencil. Drill a small hole through each of the marked locations. Use a screwdriver to fasten the mounting bracket to the door.
- (5) Install 1x CR123A batteries provided in the package.
- (6) Before the sensor is secured to the mounting bracket. Follow the inclusion instructions to verify successful communication with the Z-Wave Controller. Follow the Network Inclusion steps in next section.
- (7) After network inclusion, secure the sensor onto the mounting bracket with the sensor screw.
- (8) Test the connection by opening and closing your garage and observing the open and close statuses.

Network Inclusion

The Z-Wave Plus Garage Tilt Sensor must be added to a Z-Wave Plus network prior to use. To include the device in a network both the device and the network controller must be in inclusion mode at the same time. *Refer to the instructions provided by the manufacturer of your specific controller for details on initiating the controller's inclusion mode.*

- 1) Verify that the Z-Wave Plus controller you are using is compatible with the Z-Wave Plus Tilt Sensor.
- 2) Put your Z-Wave Plus Controller into add (inclusion) mode.
- 3) Insert the battery and press the learn button on the tilt sensor.
- 4) The LED on the front of the unit will turn off if network inclusion is successful.

Network Exclusion

- 1) Any Z-Wave Plus Device can be removed from any Z-Wave Plus controller. Follow the directions to put your Z-Wave Plus Controller into exclusion mode.
- 2) Press the inclusion / exclusion button on the Z-Wave Plus Tilt Sensor.
- 3) The LED in front of the unit will blink steadily if the network exclusion is successful.

*Please refer to the LED status section for more information on the LED behavior

Notes:

- Controller inclusion mode must be activated BEFORE starting sensor inclusion or exclusion mode.
- The device can only be included into one controller network at a time, and must be excluded from one network before inclusion in another.

LED Status

The Z-Wave Plus Tilt Sensor is equipped with a red LED. The state of the LED will change based on the state of the device.

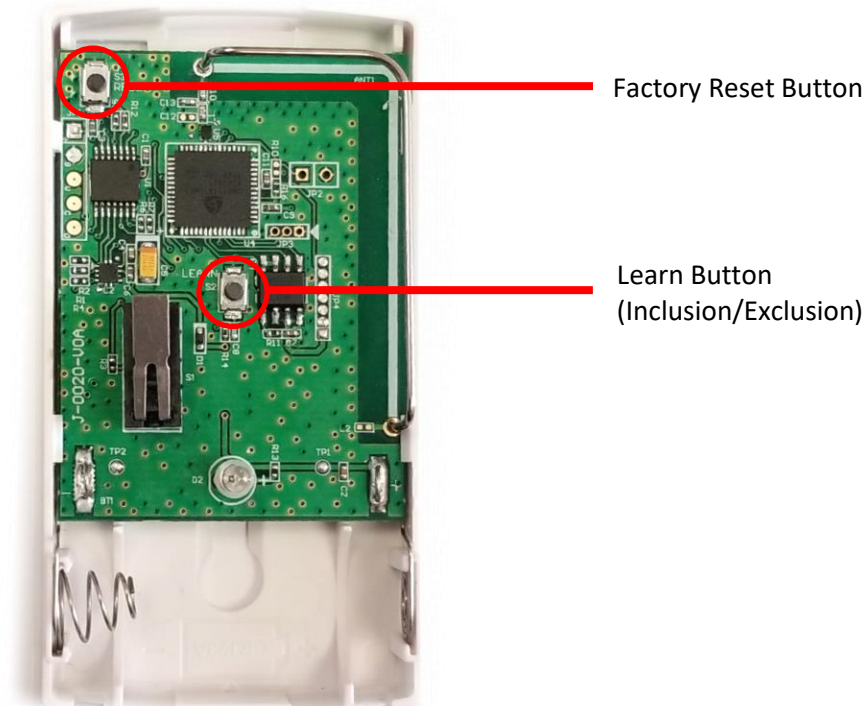
- LED Blinking - Device in learn mode
- LED On - Device OTA (over the air) Update
- LED blink - Tilt Detected/Restore, Tamper Detected/Restore

Battery State

The Z-Wave Plus Tilt Sensor will alert the user when the batteries become low. The Z-Wave Plus Tilt Sensor will continue reporting the state of the sensor until the batteries are completely depleted.

Factory Default

Please use this procedure only when the network primary controller is missing or otherwise inoperable. The Z-Wave Plus Tilt Sensor can be factory defaulted by pressing and holding the factory reset button for 5 seconds.





Z-Wave Plus Specific Information

Z-Wave Plus is a wireless mesh network and data protocol that allows devices from many different manufacturers to interoperate. This device implements Z-Wave Plus functionality, Network Wide Inclusion. The following information is intended for software engineers working on Z-Wave Plus controllers and home automation enthusiasts to integrate the Z-Wave Plus device into their system. This product can be operated in any Z-Wave network with other Z-Wave certified devices from other manufacturers. All non-battery operated nodes within the network will act as repeaters regardless of vendor to increase reliability of the network.

Z-Wave Plus Command Class Basic

For backwards compatibility with older Z-Wave Plus Controllers, the Basic Command Class is supported in the following manner. A Basic Report of 0xFF is Garage Open. A basic report of 0x00 is garage closed.

Manufacturer ID 0x01 4A
 Product Type 0x00 05
 Product ID 0x04 AA

Network Wide Inclusion

This device also supports Network Wide Inclusion such that the device can be included into the Z-Wave network over the mesh network and not directly near the main controller. This mode is automatically activated after regular inclusion was not successful.

Command Class Association

This Z-Wave Plus Tilt Sensor has two Association groups of 1 nodes.

Group one – Group one is the lifeline group. The garage door tilt sensor will send Basic Reports with a value of 0x00 if the door is closed and 0xFF if the door is opened to all nodes in group 1.

Commands Sent to Association Group One

| SENSOR CONDITION | COMMAND CLASS AND VALUE | CONFIGURABILITY |
|------------------|--|-----------------|
| Tilt Detected | Notification report Type: HOME SECURITY (0x07) Event: Garage Open (0x02) | YES* |
| | Basic Report of 0xFF | NO |
| Tilt Clear | Notification report | YES* |

| | | |
|---------------|--|------|
| | Type: HOME SECURITY (0x07) Event: Previous Events Cleared (0x00) | |
| | Basic Report of 0x00 | NO |
| Case Tampered | Notification report Type: HOME SECURITY (0x07) Event: Tampering Covering Removed (0x03) | YES* |
| | Wake Up Notification | YES |
| Case Closed | Notification report Type: HOME SECURITY (0x07) Event: Previous Events Cleared (0x00) | YES* |
| Battery Level | Battery Report of 0x01 to 0x64 is an estimated battery level. A level of 0x00 indicates that battery should be changed soon. A battery level of 0xFF indicates that the battery should be changed immediately. | NO |

*Notification Reports can be configured through the Notification Set of Notification Type 0x07, and status of: 0x00: This type of notification turned off. 0xFF: This type of notification turned on.

Z-Wave Device Class Information

This Z-Wave sensor is a Z-Wave generic Device Class of GENERIC_TYPE_SENSOR_NOTIFICATION, and a specific device class of SPECIFIC_TYPE_NOTIFICATION_SENSOR.

| Parameter Number | Description | Number of Bytes | Default | Min | Max |
|------------------|---|-----------------|--------------|-----------|---------------|
| 1 | Number of attempts the device should attempt application level retries. | 1 | 3 | 0 | 10 |
| 2 | Number of milliseconds between application levels retries. | 2 | 500 (0x01F4) | 10 (0x0A) | 5000 (0x1388) |
| 3 | The tilt angle at which the garage door is considered closed. Byte value 0: 10 degrees Byte value 1: 30 degrees Byte value 2: 50 degrees | 1 | 0 | 0 | 2 |
| 4 | The tilt angle at which the garage door is considered opened. Byte value 0: 30 degrees Byte value 1: 50 degrees Byte value 2: 70 degrees | 1 | 0 | 0 | 2 |

* If you set Parameter 3 and 4 to the same byte value, Parameter 4 must be set first before Parameter 3 can be set. The opened tilt angle must be greater than the closed tilt angle

PN TILT-ZWAVES



S2 Encryption

The sensor uses industry standard elliptic key cryptography to encrypt all sensitive communications. The DSK code is located on an insert in the product's packaging. The DSK code will also be on the QR code on the back of the sensor. The DSK is used for authenticating the encrypted command classes in the table above. A Security Enabled Z-Wave Controller must be used to fully utilize the product.

| COMMAND CLASS NAME | VERSION | SECURED USING S2 ENCRYPTION |
|-----------------------|---------|-----------------------------|
| ASSOCIATION | 2 | Yes |
| ASSOCIATION_GRP_INFO | 1 | Yes |
| BATTERY | 1 | Yes |
| BASIC | 2 | Yes |
| CONFIGURATION | 1 | Yes |
| DEVICE_RESET_LOCALLY | 1 | Yes |
| FIRMWARE_UPDATE_MD | 4 | Yes |
| MANUFACTURER_SPECIFIC | 2 | Yes |
| NOTIFICATION | 8 | Yes |
| POWERLEVEL | 1 | Yes |
| VERSION | 3 | Yes |
| WAKE_UP | 2 | Yes |
| ZWAVEPLUS_INFO | 2 | NA |
| SECURITY_2 | 1 | NA |
| SUPERVISION | 1 | Yes |
| TRANSPORT_SERVICE | 2 | NA |

FCC Compliance Statement

This device complies with part 15 of the FCC Rules. Operation is subject to the following two conditions: (1) This device may not cause harmful interference, and (2) this device must accept any interference received, including interference that may cause undesired operation.

This equipment has been tested and found to comply with the limits for Class B digital devices, pursuant to Part 15 of the FCC Rules. These limits are designed to provide reasonable protection against harmful interference in a residential installation. This equipment generates uses and can radiate radio frequency energy and, if not installed and used in accordance with the instruction manual, may cause harmful interference to radio communications. However, there is no guarantee that interference will not occur in a particular installation. If this equipment does cause harmful interference to radio or television reception, which can be determined by turning the equipment off and on, the user is encouraged to try to correct the interference by one or more of the following measures:

- Re-orient or relocate the receiving antenna
- Increase the separation between the equipment and receiver
- Connect the equipment to an outlet on a different circuit from the receiver
- Consult the dealer or an experienced radio/TV contractor for help.

Warning: Changes or modifications not expressly approved by Ecolink Intelligent Technology Inc. could void the user's authority to operate the equipment.

This device complies with Industry Canada license-exempt RSS standard(s). Operation is subject to the following two conditions: (1) this device may not cause interference, and (2) this device must accept any interference, including interference that may cause undesired operation of the device.

C'et appareil est conforme la norme d'Industrie Canada exempts de licence RSS. Son fonctionnement est soumis aux deux conditions suivantes: (1) c'et appareil ne peut pas provoquer d'interférences, et (2) c'et appareil doit accepter toute interférence, y compris les interférences qui peuvent causer un mauvais fonctionnement de la dispositif.



FCC ID: XQC-TILTZWAVE5
IC: 9863B-TILTZWAVE5

