



# Z-Wave Plus Smart Switch Dual Rocker



## Installation Guide



## Product Overview

Easily automate overhead lights, table lamps or other accessories with the Ecolink Z-Wave Plus Smart Switch. Simple to install in minutes by removing existing switch plate and installing this on the switch. No need to touch any electrical wiring.

## Features

- Quick installation, no need to access high voltage wires
- Compatible with all Z-wave certified hubs & controllers
- Preserves manual control of switch
- Senses current status of switch
- Works with dual gang Rocker type switches

## Specifications

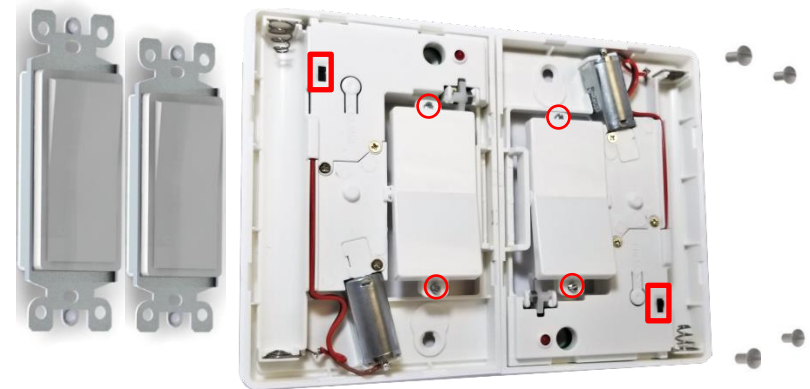
- For indoor use only
- Operating frequency: 908.42, 916 MHz
- Operating temperature: 0° – 49°C, 32° – 120°F (ambient temperature)
- Operating humidity 5-95% non-condensing
- 2 AA batteries per unit
- Battery Life: 1 year

## Package contents

- 2 x Z-Wave Plus Smart Switch (Dual Rocker)
- 4 x AA batteries
- 1 x Installation Guide

## Installation Instructions

- (1) Identify location for Z-Wave Plus Smart Switch.
- (2) Remove the switch plate covers of the existing dual light switches. Save the screws for next step.
- (3) Remove the switch plate cover of the Z-Wave Plus Smart Switch with the help of a flat head screw driver.
- (4) Install the first smart switch on the left existing switch using screws from step two. It should be oriented such that the batteries are on the left side. Next, install the second smart switch on the right existing switch using screws from step two. It should be oriented such that the batteries are on the right side.



- (5) Install 4x AA batteries provided in the package.
- (6) Follow the Network Inclusion steps in next section.
- (7) In case the switch does not operate as desired, you can make minor tweaks to the rocking action by turning the two screws adjustment screws as indicated in the picture (red circles).
- (8) If the switch operates in an inverted state during Z-wave operation i.e. turns ON instead of OFF and OFF instead of ON, toggle the position of the orientation switch (red rectangle) to fix this behavior.
- (9) Snap the covers back onto the Z-wave Plus Smart Switches to finish installation.



## Network Inclusion

The Z-Wave Plus Smart Switch must be added to a Z-Wave Plus network prior to use. To include the device in a network both the device and the network controller must be in inclusion mode at the same time. *Refer to the instructions provided by the manufacturer of your specific controller for details on initiating the controller's inclusion mode.*

- 1) Verify that the Z-Wave Plus controller you are using is compatible with the Z-Wave Plus Smart Switch.
- 2) Put your Z-Wave Plus Controller into add (inclusion) mode.
- 3) Press the inclusion / exclusion button on the Z-Wave Plus Smart Switch.
- 4) The LED on the front of the unit will turn off if network inclusion is successful

## Network Exclusion

- 1) Any Z-Wave Plus Device can be removed from any Z-Wave Plus controller. Follow the directions to put your Z-Wave Plus Controller into exclusion mode.
- 2) Press the inclusion / exclusion button on the Z-Wave Plus Smart Switch.
- 3) The LED in front of the unit will blink steadily if the network exclusion is successful.

\*Please refer to the LED status section for more information on the LED behavior





## Notes:

- Controller inclusion mode must be activated BEFORE starting sensor inclusion or exclusion mode.
- The device can only be included into one controller network at a time, and must be excluded from one network before inclusion in another.
- Exclusion mode on the sensor is initiated following the same exact procedure as inclusion.

## LED Status

The Z-Wave Plus Smart Switch is equipped with a red LED.

The state of the LED will change based on the state of the device.

- LED Blinking - Device not included into a network.  
LED On - Device in Learn mode.  
LED blink - Device in lower power mode. Remote control off.

## Battery State

The Z-Wave Plus Smart Switch will alert the user when the batteries become low. While the batteries are low, the user will be unable to change the light state remotely. The Z-Wave Plus Smart Switch will continue reporting the state of the switch until the batteries are completely depleted.

## Factory Default

The Z-Wave Plus device is automatically factory defaulted when removed from a Z-Wave Plus network. Please use this procedure only when the network primary controller is missing or otherwise inoperable.

## Z-Wave Plus Specific Information

Z-Wave Plus is a wireless mesh network and data protocol that allows devices from many different manufacturers to interoperate. This device implements Z-Wave Plus functionality, Network Wide Inclusion. The following information is intended for software engineers working on Z-Wave Plus controllers and home automation enthusiasts to integrate the Z-Wave Plus device into their system. This product can be operated in any Z-Wave network with other Z-Wave certified devices from other manufacturers. All non-battery operated nodes within the network will act as repeaters regardless of vendor to increase reliability of the network.

## Z-Wave Plus Command Class Basic

For backwards compatibility with older Z-Wave Plus Controllers, the Basic Command Class is supported in the following manner. A Basic Set of 0xFF will turn on the light switch. A basic set of 0x00 will turn off the light switch.

## Command Class Association

This Z-Wave Plus Smart Switch has two Association groups of 5 nodes. Group one – Group one is the lifeline group. The Light Switch will send Switch Binary Reports with a value of 0x00 if the light is turned off and 0xFF if the light is turned on to all nodes in group 2. Group two – The light switch will send basic reports with a value of 0x00 if the light is turned off and 0xFF if the light is turned on to all nodes in group 2.

## Network Wide Inclusion

This device also supports Network Wide Inclusion such that the device can be included into the Z-Wave network over the mesh network and not directly near the main controller. This mode is automatically activated after regular inclusion was not successful.



## FCC Compliance Statement

This device complies with part 15 of the FCC Rules. Operation is subject to the following two conditions: (1) This device may not cause harmful interference, and (2) this device must accept any interference received, including interference that may cause undesired operation.

This equipment has been tested and found to comply with the limits for Class B digital devices, pursuant to Part 15 of the FCC Rules. These limits are designed to provide reasonable protection against harmful interference in a residential installation. This equipment generates uses and can radiate radio frequency energy and, if not installed and used in accordance with the instruction manual, may cause harmful interference to radio communications. However, there is no guarantee that interference will not occur in a particular installation. If this equipment does cause harmful interference to radio or television reception, which can be determined by turning the equipment off and on, the user is encouraged to try to correct the interference by one or more of the following measures:

- Re-orient or relocate the receiving antenna
- Increase the separation between the equipment and receiver
- Connect the equipment to an outlet on a different circuit from the receiver
- Consult the dealer or an experienced radio/TV contractor for help.

Warning: Changes or modifications not expressly approved by Ecolink Intelligent Technology Inc. could void the user's authority to operate the equipment.

This device complies with Industry Canada license-exempt RSS standard(s). Operation is subject to the following two conditions: (1) this device may not cause interference, and (2) this device must accept any interference, including interference that may cause undesired operation of the device.

C'et appareil est conforme la norme d'Industrie Canada exempts de licence RSS. Son fonctionnement est soumis aux deux conditions suivantes: (1) c'et appareil ne peut pas provoquer d'interférences, et (2) c'et appareil doit accepter toute interférence, y compris les interférences qui peuvent causer un mauvais fonctionnement de la dispositif.

**FCC ID: XQC-DDLS2ZWAVE5**

**IC: 9863B-DDLS2ZWAVE5**

Device Classes	Generic Device Class	GENERIC_TYPE_BINARY_SWITCH
	Specific Device Class	SPECIFIC_TYPE_POWER_SWITCH_BINARY
Command Classes	COMMAND_CLASS_ZWAVEPLUS_INFO	v2
	COMMAND_CLASS_VERSION	v2
	COMMAND_CLASS_MANUFACTURER_SPECIFIC	v2
	COMMAND_CLASS_POWERLEVEL	v1
	COMMAND_CLASS_BATTERY	v1
	COMMAND_CLASS_SWITCH_BINARY	v1
	COMMAND_CLASS_ASSOCIATION	v2
	COMMAND_CLASS_ASSOCIATION_GRP_INFO	v1
	COMMAND_CLASS_BASIC	v1
COMMAND_CLASS_FIRMWARE_UPDATE_MD	v2	
Manufacturer ID	0x014A	
Product Type	0x00 06	
Product ID	0x00 01	



## **DISCLAIMER AND LIMITATION OF LIABILITY**

**OTHER THAN THE LIMITED WARRANTY ABOVE, ECOLINK MAKES NO OTHER WARRANTY OR REPRESENTATION, AND HEREBY DISCLAIMS ANY AND ALL IMPLIED WARRANTIES, INCLUDING, WITHOUT LIMITATION, THE IMPLIED WARRANTIES OF NON-INFRINGEMENT, MERCHANTABILITY AND FITNESS FOR A PARTICULAR PURPOSE. YOU ACKNOWLEDGE THAT YOU ALONE HAVE DETERMINED THAT THE PRODUCT WILL SUITABLY MEET THE REQUIREMENTS OF THE INTENDED USE.**

**IN NO EVENT SHALL ECOLINK OR ANY OF ITS AFFILIATES BE LIABLE FOR ANY INCIDENTAL, SPECIAL, INDIRECT, CONSEQUENTIAL, OR MULTIPLE DAMAGES, INCLUDING BUT NOT LIMITED TO, LOST PROFITS, LOSS OR DAMAGE TO SOFTWARE OR DATA, OR DAMAGE TO EQUIPMENT ARISING OUT OF THE USE OF ANY PRODUCT, EVEN IF ECOLINK HAS BEEN ADVISED OF THE POSSIBILITY OF SUCH DAMAGES. FURTHER, IN NO EVENT SHALL THE LIABILITY OF ECOLINK OR ITS AFFILIATES EXCEED THE INDIVIDUAL PRICE OF THE PRODUCT ON WHICH LIABILITY IS ASSERTED.**

By the act of use, setup or assembly of the product, you accept all resulting liability. If you as the purchaser or user are not prepared to accept the liability associated with the use of the product, you are advised to return the product immediately in new and unused condition to the place of purchase. Some states do not allow the exclusion or limitation of incidental or consequential damage, so the above limitations may not apply to you.

## **LIMITED WARRANTY**

This limited warranty is provided by Ecolink Intelligent Technology (“Ecolink”) to you as the original purchaser of the product. Ecolink warrants this product to be free from defects in material and workmanship for a period of one (1) year from the date of original purchase. The determination of whether the product is defective shall be made by Ecolink in its sole discretion with consideration given to the overall performance of the product. If Ecolink determines that any product is defective, Ecolink’s sole obligation and your sole and exclusive remedy shall be that Ecolink will replace the product.

This warranty does not apply to damage caused by shipping or handling, or damage caused by accident, abuse, misuse, misapplication, ordinary wear, improper maintenance, failure to follow instructions or as a result of any unauthorized modifications. The foregoing limited warranty is and shall be in lieu of any and all other warranties, whether expressed or implied and of all other obligations or liabilities on the part of Ecolink. Ecolink neither assumes responsibility for, nor authorizes any other person purporting to act on its behalf to modify or to change this warranty, nor to assume for it any other warranty or liability concerning this product. It is recommended that the customer check their equipment on a regular basis for proper operation

## **RETURN POLICY**

Please visit us at [www.discoverecolink.com/return](http://www.discoverecolink.com/return) to view our return policy.

This product covered by one or more claims of patents found at:  
<http://sipcollc.com/patent-list/>