

# Audio Control Unit

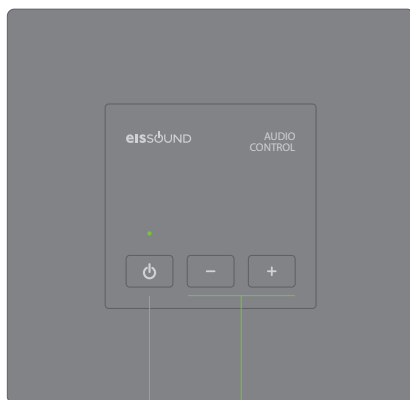


**eISSOUND**

Electrónica Integral de Sonido S.A. declares that the equipment ref.092x3, 092x4 is in accordance with directives 2014/30/UE, 2011/65/UE, 2009/125/EC. The EU declaration of conformity can be requested through the website [www.eissound.com](http://www.eissound.com)

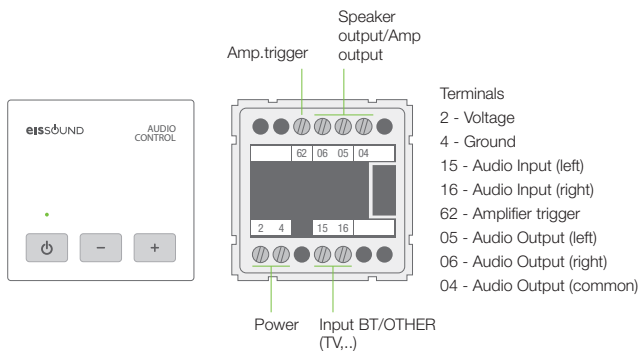
**CC-1219-01**  
**64460153**

**FRONT VIEW**



ON/OFF

VOLUME  
CONTROL KEYS



## 1. Description

The Audio Control Unit is a standalone solution that allows you to send the audio signal from one area to another, such as from a television in one room and extend it to a different area. The Unit has an ON/OFF button and a volume control UP/DOWN.

It is also the perfect fit for the In Wall Bluetooth Audio Receiver when you wish to extend the Bluetooth signal to another area, such as a bedroom/ bathroom combination.”

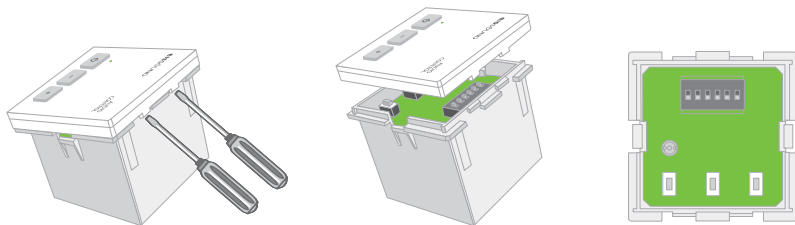
## 2. Installation Settings

At the time of installation the following settings can be set by the installer:

- Volume limit
- Mono/Stereo option
- Speaker output/Amplifier
- Level input BT/TV

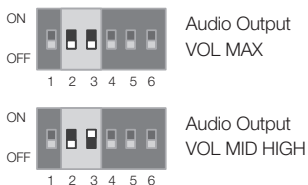
To proceed follow the next steps:

- 1 Remove the front cover



2 Select the appropriate switches for the desired configuration:

• **Volume Limit configuration:**



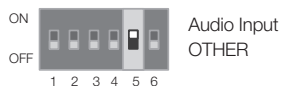
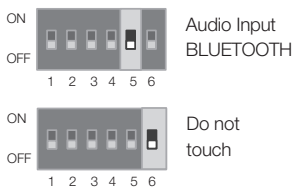
• **Mono / Stereo:**



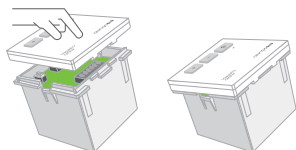
• **Speaker Output/Amplifier:**



• **Level input BT/TV:**



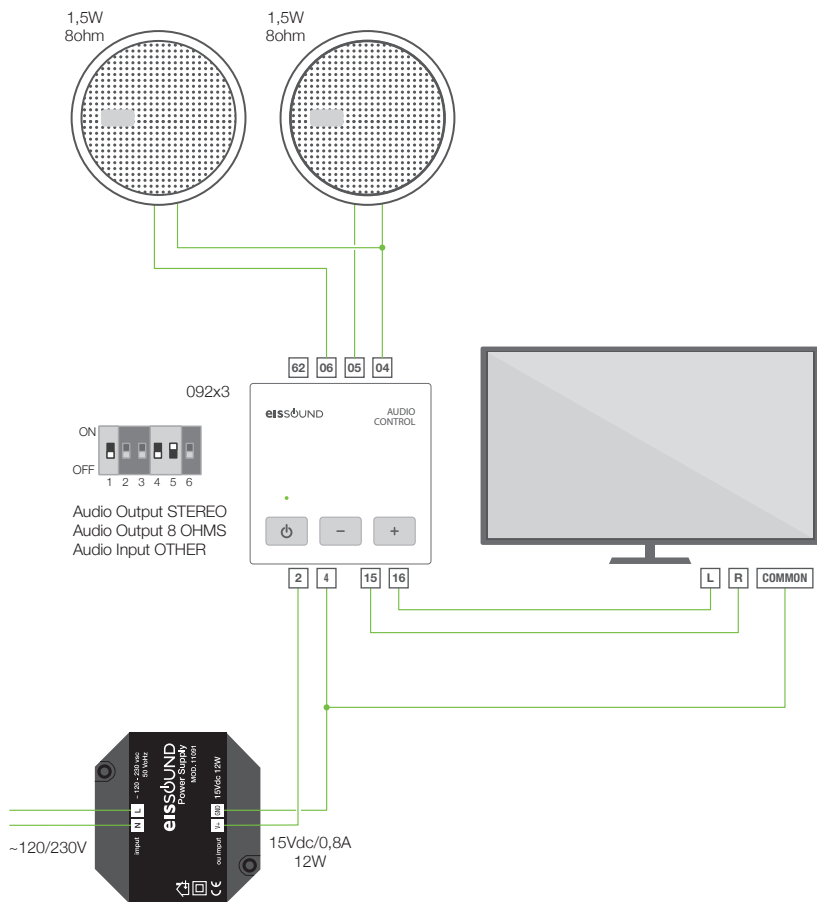
3 Place the front cover



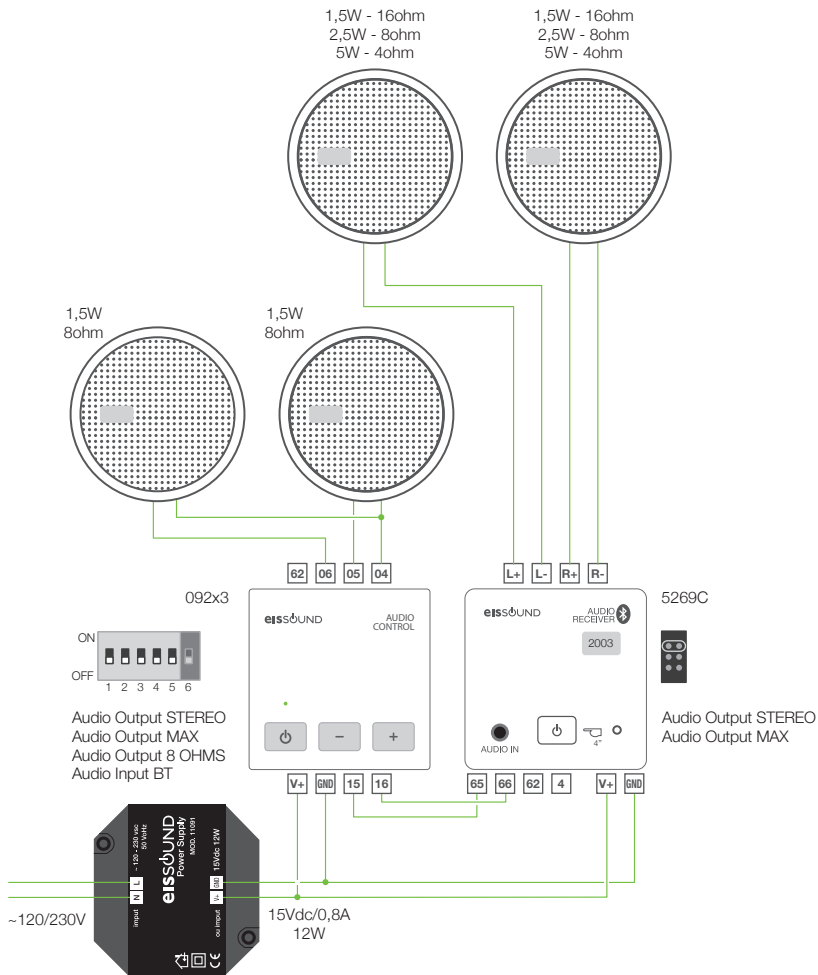
4 Power up the Control Unit

## 3. Wiring Diagrams

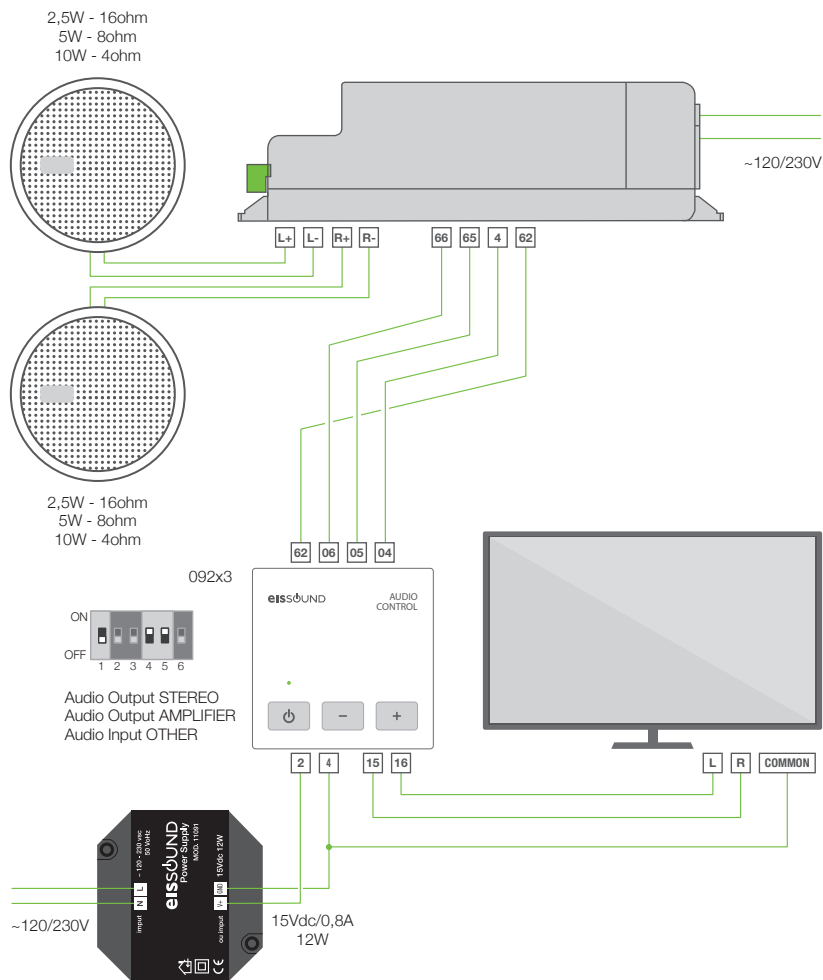
### 3.1 Basic Installation



## 3.2 In Wall Bluetooth Audio Receiver + Audio Control Unit



## 3.3 Audio Control Unit + Aux Amplifier





## 4. Technical specifications

092x3	MIN	NORMAL	MAX		NOTES
Measurements		45x45x45,5		mm	exterior (width x height x depth)
		45x45x36		mm	cavity (width x height x depth)
		45x45		mm	face cover (width x height)
Voltage	11	15	15,5	Vdc	terminals 2 (VDC), 4 (GND)
Consumption demand	31	59		mA	terminals 2 (VDC), 4 (GND)
Input signal		1,82		Vrms	terminals 15, 16 mode IN BT
		0,32		Vrms	terminals 15, 16 mode IN OTHER (TV...)
		33		Kohm	terminals 15, 16 input impedance
Output signal			1,5	W	terminals 05, 06, 04 mode OUT 8 ohm
			1,82	Vrms	terminals 05, 06, 04 mode OUT AMP
Amplifier trigger signal			5	Vdc	terminal 05 (DC component)
			14	Vdc	terminal 62
			1,8	Kohm	terminal 62 output impedance
Passband	20		22000	Hz	
Distortion		0,1	1	%	

## eISSOUND

Pol. Malpica - Grupo Quejido 87-88  
50016 Zaragoza - SPAIN  
Tel. +34 976 46 55 50 Fax +34 976 46 55 59  
marketing@eissound.com  
**www.eissound.com**

## KBSOUND

6550 St. Augustine rd. Av. Suite 305  
Jacksonville, Florida 32217  
info@kbsound.com  
**www.kbsound.com**

