

SMARTCODE 917

RESIDENTIAL ELECTRONIC LEVER

Required tools

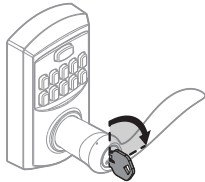


Kwikset
1-800-327-5625
www.kwikset.com

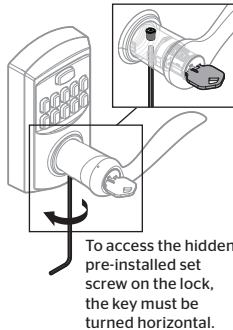
How to Re-key the Lock (if needed)

1 IMPORTANT: Remove lever before re-keying.

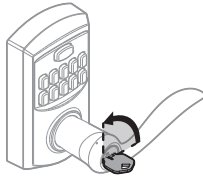
a Insert the key and turn it 90° clockwise.



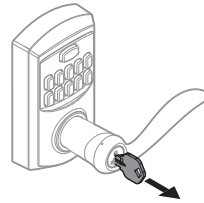
b Loosen the pre-installed set screw.



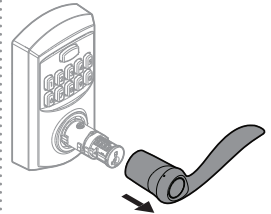
c Turn the key 90° counterclockwise.



d Remove the key.

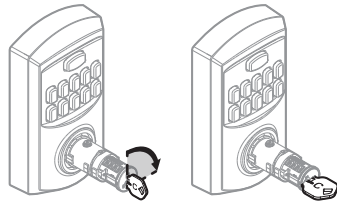


e Remove the lever.

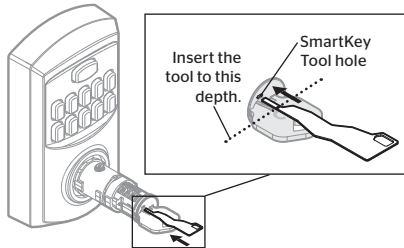


2 Re-key the lock.

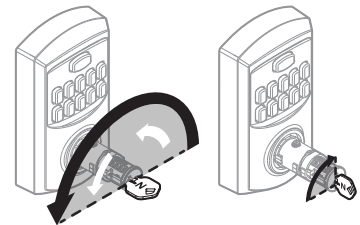
a Insert the key that currently operates your lock, and turn it 90° clockwise.



b Insert the SmartKey tool fully and firmly into the SmartKey hole, then remove the SmartKey tool and current key.

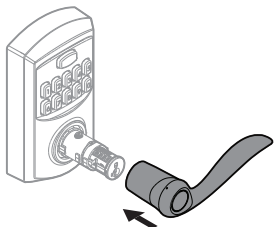


c Fully insert your new key into the lock and turn it 180° counterclockwise. Next, turn the key 90° back to the starting position, then remove it.

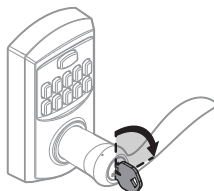


3 Re-install the lever.

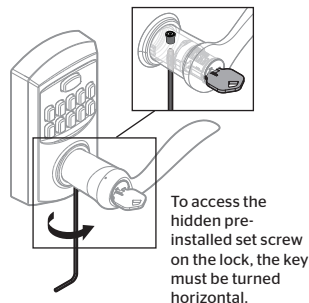
a Install the lever.



b Insert the key and turn it 90° clockwise.



c Tighten pre-installed set screw to secure exterior lever.



d Turn the key 90° counterclockwise to remove it.

