



2GIG-TILT1-345

# F/G TILT SENSOR, 345MHZ

## INSTALLATION INSTRUCTIONS

The Tilt sensor (2GIG-TILT1-345) is designed for use where the tilt status needs to be monitored. A typical application would be on a garage door. Other uses might include, mailbox lid, pet doors, and hinged crawl space doors. This tilt sensor communicates with the control panel using the 345 MHz frequency. Once the sensor is tilted to 45 degrees, the sensor will transmit to the panel. The sensor will also send a restore signal when sensor is returned to less than 45 degrees. The 2GIG-TILT1-345 is equipped with a cover tamper switch and low battery monitoring. If the case of the 2GIG-TILT1-345 is removed for any reason, the radio transmitter will send a tamper alert. Should the battery voltage drop below a prescribed level, the sensor will send a low battery report indicating that the battery requires replacing. The 2GIG-TILT-345 is compatible with GC2 firmware 1.14 and higher.

### Contents

Verify that the package includes the following:

- 1—2GIG Garage Door Sensor
- 1—Sensor Backing Plate
- 1—Battery (Installed in Sensor)
- 2—5/8" Phillips Screws
- 1— Double Stick Tape Strip

### Installation Tools Required

- Phillips Screw Driver
- Variable Speed Drill with 1/16" Drill Bit

Figure 1. Garage Door Sensor Contents

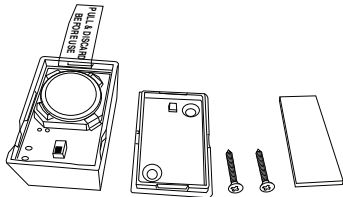
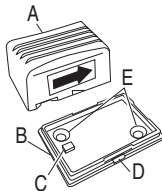


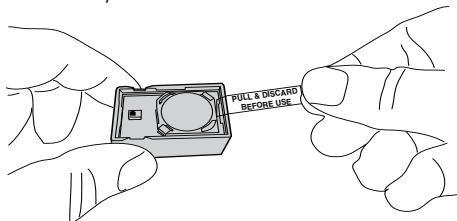
Figure 2. Garage Door Sensor Description



- A Tilt Sensor Top Housing
- B Tilt Sensor Base
- C Tamper Tab
- D Side Slots (for screwdriver)
- E Screw Mounting Holes

### Activating Tilt Sensor

Figure 3. Remove Battery Tab Insulator



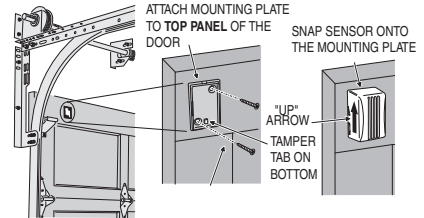
Pull out the battery tab insulator. Sensor is now activated.

### Locating the Tilt Sensor

For Sectional Garage Door Installation: The sensor should be mounted near the top of the top panel of a garage door as shown in Figure 4.

### Typical Garage Door Tilt Sensor Location

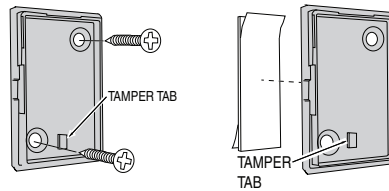
Figure 4 Sensor Location /Garage Door



If the sensor is being used to monitor something other than a garage door opening, mount where convenient and in a **vertical position**.

### Mounting Tilt Sensor Base

Figure 5 Mounting Methods for Sensor Base



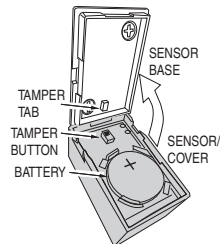
Choose option to mount the sensor base. Both screws and double-stick tape are provided with the sensor.

**NOTE:** Be sure that Tamper Tab on Base faces down towards the floor.

### Mounting Tilt Sensor

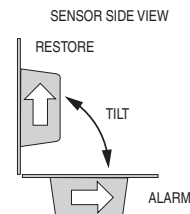
1. To mount the Sensor do the following:
2. Use the Base of the Sensor as a template and mark the mounting holes for drilling or the area where Base will be Double Stick taped.
3. Drill holes and install screws OR remove backing from double-stick tape and install Base in place. Snap the sensor cover on to the base making sure that the Tamper Tab on the base aligns with the Tamper button as shown in Figure 5.

Figure 6 Snap Sensor/Cover onto Sensor Base



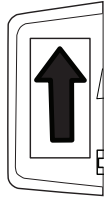
If Sensor Base and Sensor/Cover are correctly assembled, the arrow on the side of the Sensor Cover should be pointing UP toward the ceiling (See Figure 8).

Figure 7 Sensor Alarm Activation



**NOTE:** To learn how to program a sensor into the Control Panel, see the Control Panel's *Installation & Programming Guide*.

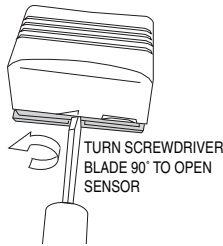
**Figure 8.** Arrow label points upward



**NOTE:** Avoid mounting the sensor in areas where it will be exposed to moisture or where the sensor will be exposed to temperatures outside its operating range of 0 to 120° F (0 to 49° C). Avoid mounting the sensor in areas with a large quantity of metal or electrical wiring.

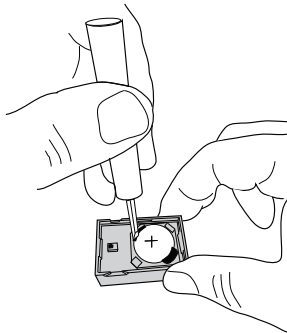
### Replacing Battery

**Figure 9.** Replacing the Battery



1. To remove the Sensor/Cover from the base, press a flathead screwdriver into the slot on the sides of the sensor, and turn the screwdriver 90°.

**Figure 10.** Removing the battery



2. Place a small flathead screwdriver in the slot between the metal clip and the battery, then twist the screwdriver slightly while holding back one of the black plastic edges holding the battery. Dispose of battery.

**IMPORTANT:** Always dispose and/or recycle used batteries in accordance with the hazardous waste recovery and recycling regulations for your location. Your city, state, or country may also require you to comply with additional handling, recycling, and disposal requirements.

3. Insert the replacement battery with the plus (CR 2032) (+) sign facing up.
4. Verify programming and RF communication with the panel.
5. Replace the Sensor/Cover onto the Sensor Base being sure that the tamper button is aligned with the tamper tab as shown in Figure 5.

### SPECIFICATIONS

Typical battery life	5 to 8 years
Operating Temperature	2° to 120°F (0° to 49° C)
Operating Rel. Humidity	5 to 85%, non-condensing
Operating Frequency	345MHz
Tilt Switch Angle	45 degrees

### REGULATORY INFORMATION

This equipment has been tested and found to comply with the limits for Class B Digital Device, pursuant to Part 15 of the FCC Rules. These limits are designed to provide reasonable protection against harmful interference in a residential installation. This equipment generates and can radiate radio frequency energy and, if not installed and used in accordance with the instructions, may cause harmful interference to radio communications. However, there is no guarantee that interference will not occur in a particular installation. If this equipment does cause harmful interference to radio or television reception, which can be determined by turning the equipment off and on, the user is encouraged to try to correct the interference by one or more of the following measures.

- Reorient or relocate the receiving antenna
- Increase the separation between the equipment and receiver
- Connect the equipment into an outlet on a circuit different from that to which the receiver is connected
- Consult the dealer or an experienced radio/TV technician for help.

Any changes or modifications not expressly approved by the party responsible for compliance could void the user's authority to operate the equipment.

Le présent appareil est conforme aux CNR d'Industrie Canada applicables aux appareils radio exempts de licence. L'exploitation est autorisée aux deux conditions suivantes: (1) l'appareil ne doit pas produire de brouillage, et (2) l'utilisateur de l'appareil doit accepter tout brouillage radioélectrique subi, même si le brouillage est susceptible d'en compromettre le fonctionnement.

### FCC COMPLIANCE STATEMENT

This device complies with FCC Rules and Regulations as Part 15 devices as well as Industry Canada license exempt RSS Rules and Regulations. Operation is subject to the following two (2) conditions: This device may not cause harmful interference. This device must accept any interference received, including interference that may cause undesired operation.

### LIMITED WARRANTY

This Nortek Security & Control LLC product is warranted against defects in material and workmanship for two (2) years. This warranty extends only to wholesale customers who buy direct from Nortek Security & Control LLC or through Nortek Security & Control normal distribution channels. Nortek Security & Control does not warrant this product to consumers. Consumers should inquire from their selling dealer as to the nature of the dealer's warranty, if any.

There are no obligations or liabilities on the part of Nortek Security & Control for consequential damages arising out of or in connection with use or performance of this product or other indirect damages with respect to loss of property, revenue, or profit, or cost of removal, installation, or reinstallation. All implied warranties for functionality, are valid only until the warranty expires. This Nortek Security & Control Warranty is in lieu of all other warranties expressed or implied.

#### Nortek Security & Control LLC

2GIG  
1950 Camino Vida Roble, Suite 150  
Carlsbad, CA 92008-6517 USA



#### For technical support in the USA and Canada:

855-2GIG-TECH (855-244-4832)  
Email: 2gigtechsupport@nortek.com  
Visit [www.nortekcontrol.com](http://www.nortekcontrol.com) for technical support hours of operation

#### For technical support outside of the USA and Canada:

Contact your regional distributor  
Visit [dealer.2gig.com](http://dealer.2gig.com) for a list of distributors in your region

