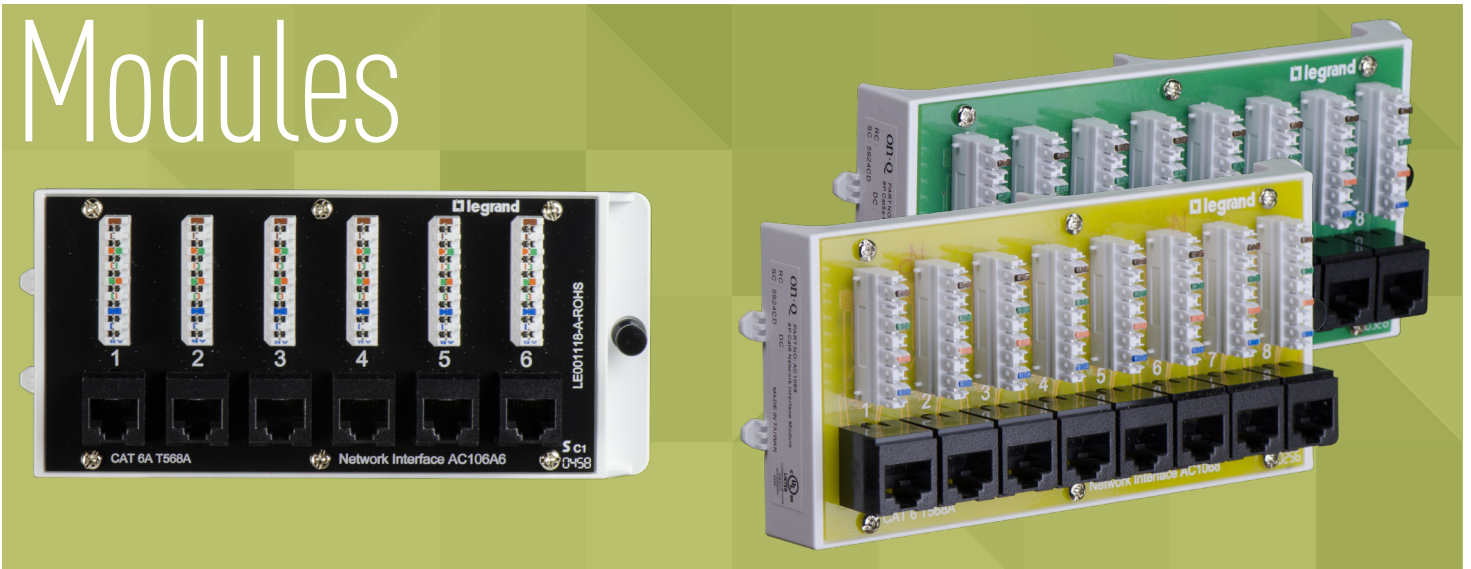


Network Interface Modules

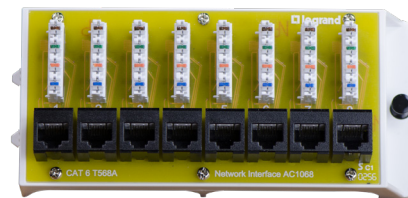


RELIABLE HOME NETWORKING WITH MAXIMUM DATA THROUGHPUT.

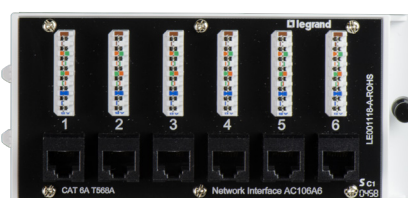
On-Q 6 & 8-Port Network Interface Modules are designed to connect a Wi-Fi router or switch to wired networking locations throughout the home. Terminate up to 8 data lines to connect high-speed devices like computers, smart TVs, gaming systems and network streaming devices to the home network and ensure a future-proof connection with maximum data throughput. Available in 3 different module types to support Cat 5e, Cat 6 or Cat6a cable connections.



AC1058
Cat 5e



AC1068
Cat 6

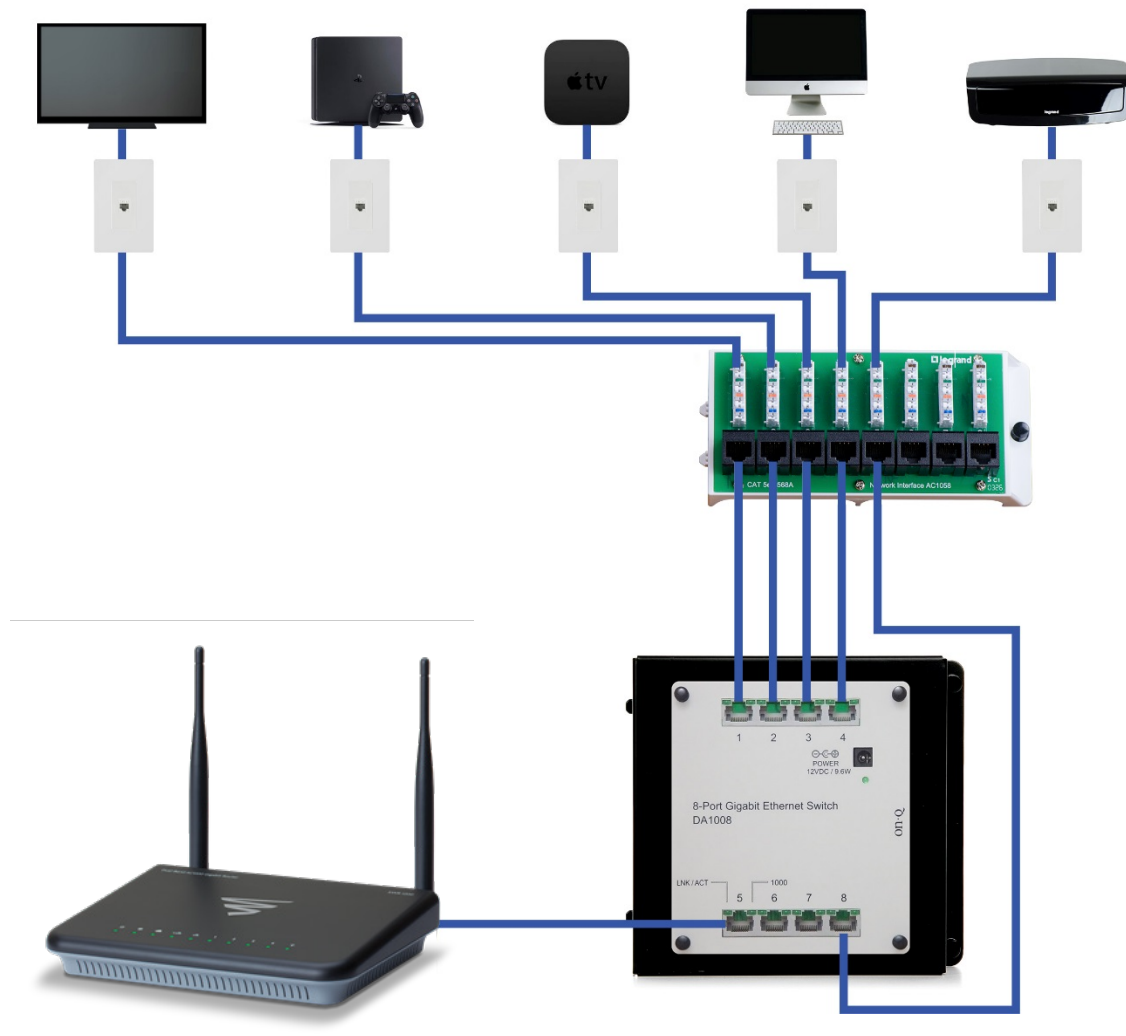


AC106A6
Cat 6a

FEATURES & BENEFITS

- Supports punch down termination of up to 8 data lines for interface with home network
- Supports termination using T568A wiring standard
- UL Listed and exceeds TIA/EIA 568-C.2 industry standards
- Fits all On-Q metal and plastic structured wiring enclosures
- Efficient installation with front mounted 110-IDC terminals and RJ45 connectors
- Bracket made of reinforced plastic to support proper punch down terminations and also maintain Wi-Fi transparency when paired with the plastic enclosure

Network Interface Modules



COMPLETE YOUR
INSTALLATION WITH
ON-Q UL-VERIFIED
PATCH CABLES.

Available in 1, 2, 3, 7, 14, 25 & 50
Foot Lengths



- AC35XX-WH-V1
Cat 5e Patch Cables (White)
- AC36XX-BE-V1
Cat 6 Patch Cables (Blue)
- AC6AXX-GY-V1
Cat 6a Patch Cables (Gray)