

## 1. INTRODUCTION

Thank you for your purchase of a SkylinkHome™ Mini Screw-In Dimmer Model LX-318. This Mini Screw-In Dimmer allows you to wirelessly turn on and off, dim and brighten connected lights with the SkylinkHome™ lighting transmitters.

The Mini Screw-In Dimmer LX-318 can communicate with up to 8 transmitters, so user has the option to add more transmitters to the system, such as more remote controls, or motion sensors etc.

All wireless signal communications within the SkylinkHome™ System are based on rolling code technology to ensure highest security is used.

The following items are included in this package:

- Mini Screw-In Dimmer
- User's Instructions



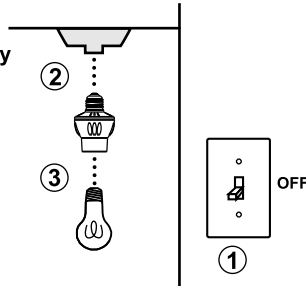
Mini Screw-In Dimmer  
LX-318

## 2. SETUP

There is no wiring involved in setting up the Mini Screw-In Dimmer LX-318.

### CAUTION

1. Turn off the light switch of the empty socket where you plan to install the Mini Screw-In Dimmer.
2. Screw the Mini Screw-In Dimmer to an empty socket.
3. Screw a light bulb to the fixture end of the Mini Screw-In Dimmer.



The Mini Screw-In Dimmer is designed to operate incandescent light or dimmable compact fluorescent light with a maximum load of 60W at 120VAC. Light bulbs must be dimmable in order to achieve dimming function.

## 3. PROGRAMMING TRANSMITTERS

In order to operate the Mini Screw-In Dimmer remotely, a transmitter must be programmed to the Mini Screw-In Dimmer. Each Mini Screw-In Dimmer can be operated by up to 8 different transmitters (or 8 different command signals).

To program a transmitter into the Mini Screw-In Dimmer, follow the instructions below. You will also need the instructions from the transmitter.

1. The Mini Screw-In Dimmer should be powered off initially. This can be done by switching off the wall switch or circuit breaker controlling the Mini Screw-In Dimmer.
2. Power on the Mini Screw-In Dimmer by switching on the wall switch or circuit breaker. You will hear a beep from the Mini Screw-In Dimmer. The beep indicates the Mini Screw-In Dimmer is now in programming mode and it will stay in this mode for 15 seconds.
3. Transmit a "Learn" code from the transmitter. Refer to the manual of the transmitter to transmit this "Learn" code.
4. Once the transmitter is programmed, the Mini Screw-In Dimmer will beep, indicating you have successfully programmed the transmitter to the Mini Screw-In Dimmer. Now the programmed transmitter is ready to be used.

Note: To program other transmitters/sensors (besides TC transmitter), please refer to the instructions of those transmitters/sensors and the above instructions.

## 4. OPERATING MODES

The Mini Screw-In Dimmer can control the light in 2 different operating modes.

- 1) On / Off Mode - Allows operating the light either on and off, without dimming function.
- 2) Dimming Mode - Allows operating the light in on, off or dimming (dim / brighten). Light must be either incandescent light or dimmable compact fluorescent light.

### WARNING

**Non-dimmable load has to be always working under ON/OFF mode. Using non-dimmable load under dimming mode may damage the non-dimmable CFL.**

The factory default operating mode is on/off mode. However, if your light is dimmable, you may change the operating mode to Dimming Mode. To change the operating modes, please follow the instructions below.

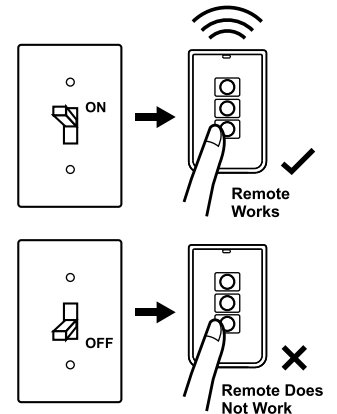
1. Turn on the light by activating the programmed transmitter.
2. Press and hold a button on the transmitter (TC series, TM series, TD series, TB series) that is programmed to the module for 10 seconds.
3. The light will flash. If it flashes once, that means it is in On / Off Mode. If the light flashes twice, that means it is in Dimming Mode.
4. Repeating step 2 above will toggle the setting between On / Off Mode and Dimming Mode.

Note: When used with an optional Motion Sensor ID-318, this Mini Screw-In Dimmer can operate under countdown timer mode.

## 5. OPERATION

Note:

If the Mini Screw-In Dimmer is installed after a wall switch, you can use the transmitter to operate the light remotely only if the wall switch is in the ON position. If the wall switch is off, no power is provided to the Mini Screw-In Dimmer and therefore, it cannot operate the light.



In case the transmitter is not on hand, you can still operate the lighting fixture with the wall switch.

This receiver offers two optional states after powered on, choose the one which fits your requirement.

### 1. Power On - Light On:

- 1) You may use the wall switch to control the light as usual. When the wall switch is off, the light is off. When the wall switch is on, the light is on.
- 2) After a power outage and the electricity comes back, the light will be on if the wall switch is in On position.

### 2. Power On - Light Off:

- 1) A special sequence is needed to turn on the light by the wall switch. To turn on the light by the wall switch: 1) Switch On, 2) Switch Off, 3) Switch On again within 2 seconds. Light will be on.
- 2) After a power outage and electricity comes back, the light will be off under most of the circumstances.

To toggle a receiver between these two states, re-program a transmitter twice consecutively to the receiver. Referring to Section 3, repeat the programming steps twice consecutively with a transmitter that is already programmed, the receiver will change state.

## 6. ERASING TRANSMITTERS FROM THE MINI SCREW-IN DIMMER

You may erase a transmitter from the Mini Screw-In Dimmer, but you cannot erase a specific device directly, you must erase all the wireless devices, then program the ones you want to keep. Follow the instructions below to erase programmed transmitters.

1. Power off the lighting receiver. (Switch off the wall switch)
2. Transmit a "Erase" code from the transmitter until step 4.
3. Power up the Mini Screw-In Dimmer (Switch on the wall switch), you will hear a beep.
4. You may stop the "Erase" code signal transmission, the Mini Screw-In Dimmer will beep, indicating you have successfully erased all the devices from the Mini Screw-In Dimmer.

To erase other transmitters / sensors, please refer to the instructions of the transmitters / sensors.

## 7. TECHNICAL SPECIFICATIONS

Input Voltage: 120VAC , 60Hz  
Standby Current: 6mA  
Minimum Load: 10W  
Maximum Load: 60W at 120VAC  
Operating Frequency: 318MHz  
Operational Temperature: -4° F - 140° F (-20° C - 60° C)  
Humidity: 5%-95%  
Range: Up to 500 feet in open area

## 8. FCC

The Remote Control is approved by the FCC and it complies with Part 15 of the FCC Rules. Its operation is subject to the following two conditions :

1. This device may not cause harmful interference.
2. This device must accept any interference that may cause undesired operation.

### WARNING:

Changes or modifications to this unit not expressly approved by the party responsible of compliance could void the user's authority to operate the equipment.

## 9. WARRANTY

If, within one year from date of purchase, this product should become defective (except battery), due to faulty workmanship or materials, it will be repaired or replaced, without charge. Proof of purchase and a Return Authorization are required.

## 10. CUSTOMER SERVICE

If you would like to

- find out the up-to-date specifications
- know more about features and applications
- download documents, i.e. user's instructions
- order Skylink products

or if you have difficulty getting products to work, please:

1. visit our FAQ section at [www.skylinkhome.com](http://www.skylinkhome.com), or
  2. email us at [support@skylinkhome.com](mailto:support@skylinkhome.com), or
  3. call our toll free at 1-800-304-1187 from Monday to Friday, 9 am to 5 pm EST.
- Fax (800) 286-1320

## 11. ACCESSORIES

The SkylinkHome™ System consists of many other devices such as SkylinkHome™ Remotes, Motion Sensor, ON/OFF Wall Switch, Wall Dimmer, Plug-In Dimmer with or without Repeater, Plug-In ON/OFF Control (Outdoor/Indoor), Screw-In Dimmer, ON/OFF/Dimming Control, ON/OFF Control, Smart Button™ Garage Door Control, etc. Please visit Skylink website at [www.skylinkhome.com](http://www.skylinkhome.com) for more information.



### CUSTOMER SERVICE

17 Sheard Avenue, Brampton, Ontario, Canada L6Y 1J3

Email: [support@skylinkhome.com](mailto:support@skylinkhome.com)

<http://www.skylinkhome.com>

P/N. 101Z871

Patent Pending

©2010 SKYLINK GROUP