

## Plug-In Dimmer / Repeater

### 1. INTRODUCTION

Thank you for your purchase of a SkylinkHome™ lighting receiver, Plug-In Dimmer PL-318 or PR-318 or PR-318S. The receiver module allows you to wirelessly turn on and off, dim and brighten connected lights with the SkylinkHome™ transmitters. PR-318, PR-318S also repeats signal as a repeater to extend the operating range.

The Plug-In Dimmer with Repeater PR-318 and PR-318S can communicate with up to 16 transmitters; the Plug-in Dimmer without repeater PL-318 can communicate with up to 8 transmitters. Users have the option to add more transmitters to the system, such as more remote controls, or motion sensors etc.

All wireless signal communications within the SkylinkHome™ System are based on rolling code technology to ensure highest security is used.

The following items are included in this package:

- Plug-In Dimmer (PL-318) or Plug-In Dimmer with Repeater (PR-318) or Plug-In Dimmer with Security Repeater (PR-318S)
- User's Instructions



Plug-In Dimmer PL318 /  
Plug-In Dimmer with Repeater PR-318 /  
Plug-In Dimmer with Security Repeater PR-318S

### 2. SETUP

Simply plug the Plug-In Dimmer to an AC electrical outlet, then plug in a light that you would like to operate to the socket on the Plug-In Dimmer. You may place the antenna in the upright position to have the best reception.

The Plug-In Dimmer is designed to operate incandescent light or dimmable compact fluorescent light with a maximum load of 300W at 120VAC. Light bulbs must be dimmable in order to achieve dimming function.

### 3. PROGRAMMING TRANSMITTERS

In order to operate the Plug-In Dimmer remotely with a transmitter or sensor, it must be programmed to the Plug-In Dimmer.

**There are 3 operating modes with the Plug-In Dimmer:**

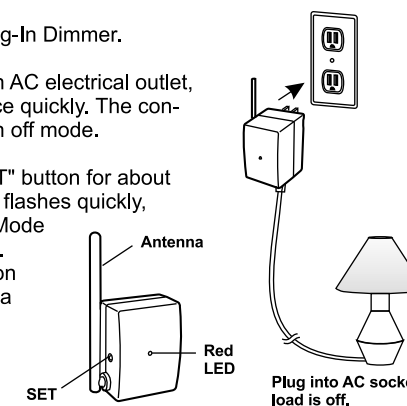
- 1) Regular Mode - When a valid signal is received, it will turn on or off the light, or change the brightness of the light.
- 2) Flashing Alert Mode - When a valid signal is received, the light will flash for a specific period of time, which is the time defined in the timer duration. This works as an alert indication.
- 3) Countdown Timer Mode - When a valid signal is received, the load will be on for a specific period of time, 1 minute, 5 minutes, 15 minutes, 30 minutes, or 60 minutes. This is mainly for energy saving.

You can program multiple transmitters / sensors to the module and different transmitter / sensor can activate a different mode.

**To program a transmitter into the Plug-In Dimmer, follow the instructions below:**

Before you program a transmitter to the Plug-In Dimmer, decide the operating mode for this transmitter (Regular Mode, Flashing Alert Mode or Countdown Timer Mode).

1. Plug in a load to the Plug-In Dimmer.
2. Plug in the module to an AC electrical outlet, the red LED flashes once quickly. The connected light should be in off mode.
3. Press and hold the "SET" button for about 3 seconds, the red LED flashes quickly, meaning it is in On/Off Mode programming sequence. Release the "SET" button if you are programming a transmitter to operate in On/Off Mode.



### 3. PROGRAMMING TRANSMITTERS (CONT)

4. If you are programming a transmitter to operate in Flashing Alert Mode, continue to hold the "SET" button for about 10 seconds, until the red LED flashes slowly, then release the "SET" button.
5. If you are programming a transmitter to operate in Countdown Timer Mode, continue to hold the "SET" button for about 10 seconds, until the red LED is on steadily on, then release the "SET" button.

Operating Mode	LED Indication
Regular	Quick Flashes
Flashing Alert	Slow Flashes
Countdown Timer	Steadily On

6. Transmit a "Learn" code from the transmitter. Refer to the manual of the transmitter to transmit this "Learn" code.
7. Once the transmitter is programmed, the red LED flashes quickly then stops flashing. You have successfully programmed the transmitter.

Note: You must complete the programming sequence within the 15-second interval, otherwise, the module will quit from programming mode and you need to start again from step 3 if the red LED is off.

### 4. SET TIMER DURATION

This section is for transmitters that are programmed for Flashing Alert Mode and Countdown Timer Mode.

The timer for both Flashing Alert Mode and Countdown Timer Mode can be set to the following duration, meaning the light will stay on for the following time: 1 minute, 5 minutes, 15 minutes, 30 minutes, or 60 minutes. Only one timer interval can be set. To set the timer duration, follow the instructions below.

1. Plug in the module to an AC socket so it is powered on properly.
2. Turn on the connected load by a programmed transmitter. The load must be on under regular mode in order to set the timer duration.
3. Press and hold the SET button for 3 seconds, the red LED flashes once. The number of flashes indicates the timer duration:

Number of Flashes	Timer Duration
1	1 min.
2	5 min.
3	15 min.
4	30 min.
5	60 min.

4. Continue to hold the SET button until it reaches the desired setting. The status will change every 6 seconds, i.e. hold onto the SET button, you will see the number of flashes changes from 1 to 2, 2 to 3, etc.

Note: Once the number of flashes reaches 5, it will stay at this setting. If you would like to go back to other settings, such as 1 flash, release the button and repeat from step 1 to start over.

Once a transmitter (button) is programmed for timer mode or flashing mode, activating this programmed transmitter (button) will turn on the light for the specified timer duration.

During a timer count down, if the module receives another signal for timer operation, the timer will start again and overrides the previous timer, therefore, extending the On period by another timer interval.

To stop a timer count down, press a programmed button for regular mode.

### 5. REGULAR OPERATING MODE

Under regular mode, the Plug-In Dimmer can control the light in 2 different operating modes.

- 1) On / Off Mode - Allows operating the light either on or off, without dimming function.
- 2) Dimming Mode - Allows operating the light in on / off or dimming (dim / brighten). Light must be either incandescent light or dimmable compact fluorescent light.

## 5. REGULAR OPERATING MODE (CONT)

**WARNING** ⚠️  
**Non-dimmable load has to be always working under ON/OFF mode. Using non-dimmable load under dimming mode may damage the non-dimmable CFL.**

The factory default operating mode is On / Off mode. However, if your light is dimmable, you may change the operating mode to Dimming Mode. To change the operating modes, please follow the instructions below.

1. Turn on the light by the programmed transmitter.
2. Press and hold a button on the transmitter that is programmed to the module in "Regular" mode for about 10 seconds.
3. The light will flash. If it flashes once, that means it is in On / Off Mode. If it flashes twice, that means it is in Dimming Mode.
4. Repeating step 2 above will toggle the setting between On / Off Mode and Dimming Mode.

### 5.1 ON / OFF Operation:

The Plug-In Dimmer allows on / off operation, when the programmed button is pressed, it will transmit a signal to toggle the status of a light. For example, if a toggle signal is received when the light is off, that signal will turn on the light.

### 5.2 Brightness control operation:

Besides turning on and off the light, you may also control the brightness of the light if the light bulb is either incandescent light or dimmable compact fluorescent light.

To change the brightness, first turn on the light.

Press and hold the programmed button on the transmitter will change its brightness. Hold the button until the desired brightness is reached, then release the button.

Press and hold the same button again on the transmitter to change the brightness again in the opposite way. When the desired brightness is reached, release the button.

Refer to the user's instructions of the transmitter for more detailed instructions for dimming operation, as well as other operations such as Zone On / Zone Off, All On / All Off etc.

Note: Press and hold for more than 10 seconds will toggle the mode between ON/OFF and Dimming.

## 6. FLASHING ALERT OPERATING MODE

If a transmitter or a sensor is programmed to the Plug-In Dimmer under the flashing alert mode, when that transmitter is activated, the light connected will flash for the predetermined timer interval and the LED will also flash. The brightness of the light can only be set under regular mode. After the timer interval, the light will be off.

Pressing a programmed button for regular mode can override the flashing alert operation.

## 7. COUNTDOWN TIMER OPERATING MODE

If a transmitter or a sensor is programmed to the Plug-In Dimmer under the countdown timer mode, when that transmitter is activated, the light connected will be on for the predetermined timer interval and the LED will also be on. The brightness of the light can only be set under regular mode. After the timer interval, the light will be off.

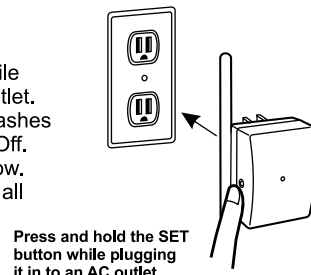
Pressing a programmed button for regular mode can override the countdown timer operation.

## 8. ERASING TRANSMITTERS FROM THE MODULE

You may erase a transmitter or sensor from the module, but you cannot erase a specific device directly, you must erase all the wireless devices, then program the ones you want to keep. Follow the instructions below to erase programmed transmitters / sensors.

## 8. ERASING TRANSMITTERS FROM THE MODULE (CONT)

1. Power off the Plug-In Dimmer by removing it from the AC socket.
2. Press and hold the SET button, while plugging in the module to an AC outlet.
3. The red LED will be on first, then flashes rapidly for 1 second, then ON and Off.
4. You may release the SET button now.
5. Now you have successfully erased all the devices.

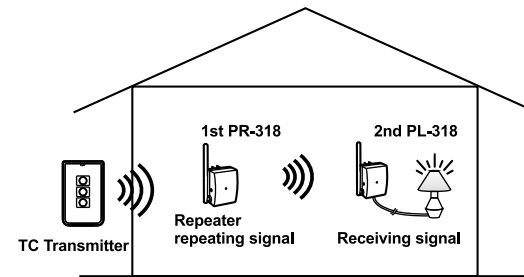


Press and hold the SET button while plugging it in to an AC outlet

## 9. REPEATER (For Model PR-318 only)

(Only applicable to PR-318)

The Plug-In Dimmer with Repeater can also repeat wireless signals from any SkylinkHome™ System transmitters to any SkylinkHome™ System receiver in range. This increases the operating range or eliminates dead spots.



As a general rule of thumb, if you are experiencing dead spots, you may place the Plug-In Dimmer with Repeater in the middle of transmitter and receiver to see if you can eliminate the dead spots. If so, you can leave the Plug-In Dimmer with Repeater there. If the dead spot still exists, you can place the Plug-In Dimmer with Repeater somewhere else until the receiver response to the transmitter.

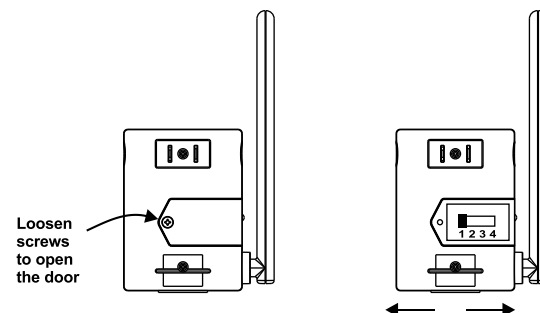
You can have multiple repeaters operating in one premise. However, unless it is necessary, it is suggested to keep the number of repeaters as few as possible to reduce the number of wireless signals.

If you do not experience dead spot, it is recommended that you switch off the repeating function. The factory default setting is off for the repeater function. You can skip this step if you do not experience dead spot.

If you have multiple repeaters, it is important to set the delay time of each repeater to be different in order to avoid signal collision. The delay time indicates how soon the signal will be repeated after it is received by repeater. There are 4 positions for the switch.

Switch Position	Results	When to use this setting:
1 (Left)	Repeat with slight delay (<0.5 sec)	For the first repeater
2	Repeat with more delay (>0.5 sec)	For the second repeater
3	No repeat	If you do not experience dead spot
4 (Right)	Not used	Not used

To change the setting, remove the screw on the back of the Plug-In Dimmer with Repeater and open the door. Place the sliding switch position at the desired setting. After selecting the switch position, secure the door with the screw.



## 10. OPERATING THE SECURITY SYSTEM (For Model PR-318S only)

(Only applicable to PR-318S)

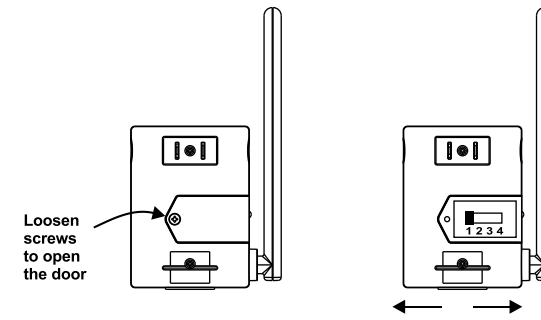
The Plug-In Dimmer with Security Repeater can convert signals from a TC-318-7, 10, 14 Transmitter to operate Skylink Security Systems. It can operate 3 functions: Arm Away, Disarm, Panic.

The TC-318-7,10, 14 Transmitter must be programmed to the Skylink Security Control Panel before operation.

**Program TC-318-7, 10, 14 to Skylink Security Control Panel (such as Model SC-001, AM-001, ML-001)**

Program the Transmitter to PR-318S

1. Follow the diagram below to remove the screw and compartment door.



2. Place the slide switch to the most left position, that is, position 1. Secure the compartment door with screw.

Note: After programming a Transmitter to operate a Control Panel, if you set the slide switch back to position 2, which allows you to program Transmitter to operate the plug-in light thru the socket on the PR-318S.

3. Plug the Plug-In Dimmer with Security Repeater into an AC electrical outlet.
4. Press and hold the SET button for about 3 seconds, the red LED flashes quickly. Release the SET button.
5. Press the learn button on the back of the Transmitter TC-318-7, 10, 14, then press the number button on the Transmitter that you would like to use to operate the Skylink Security System.
6. Once the transmitter is programmed, the red LED on the Plug-In Dimmer with Security Repeater flashes quickly then off. You have successfully programmed the transmitter to the PR-318S. Then you need to program the Transmitter to the Control Panel.
7. Refer to the instructions of the Control Panel, place it into programming mode and program the button on the Transmitter that you just programmed to the PR-318S to the Control Panel. For instance, if you programmed Button 1 to the PR-318S, now program Button 1 to the Control Panel as adding a remote control to this Control Panel.

You have now programmed this button to both PR-318S and the Control Panel. This button is now ready to operate Control Panel.

### Operating the Security System with TC-318-7, 10, 14 Transmitter

There are 3 functions that you can operate the Security System. Follow the instructions below:

To send a Panic Signal, press the programmed numbered-button only. For instance [1]. It will activate the Control Panel in panic alarm mode.

To send an Arm Away Signal, press [ ] + [Numbered Button]. For instance [ ] + [1]. It will arm the Control Panel in Away mode.

To send a Disarm Signal, press [ ] + [Numbered Button]. For instance [ ] + [1]. It will disarm the Control Panel.

You should also open the slide switch compartment door to ensure the slide switch is on position 2 or 3.

## 11. TECHNICAL SPECIFICATIONS

Input Voltage: 120V AC, 60Hz  
 Standby Current: 6mA  
 Minimum Load: 10W  
 Maximum Load: 300W at 120VAC  
 Operating Frequency: 318MHz  
 Operational Temperature: -4° F - 140° F (-20° C - 60° C)  
 Humidity: 5%-95%  
 Range: Up to 500 feet in open area

## 12. FCC

The Device is approved by the FCC and it complies with Part 15 of the FCC Rules. Its operation is subject to the following two conditions :  
 1. This device may not cause harmful interference.  
 2. This device must accept any interference that may cause undesired operation.

### WARNING:

Changes or modifications to this unit not expressly approved by the party responsible of compliance could void the user's authority to operate the equipment.

## 13. WARRANTY

If, within one year from date of purchase, this product should become defective (except battery), due to faulty workmanship or materials, it will be repaired or replaced, without charge. Proof of purchase and a Return Authorization are required.

## 14. CUSTOMER SERVICE

If you would like to  
 - find out the up-to-date specifications  
 - know more about features and applications  
 - download documents, i.e. user's instructions  
 - order Skylink products

or if you have difficulty getting products to work, please:  
 1. visit our FAQ section at [www.skylinkhome.com](http://www.skylinkhome.com), or  
 2. email us at [support@skylinkhome.com](mailto:support@skylinkhome.com), or  
 3. call our toll free at 1-800-304-1187 from Monday to Friday, 9 am to 5 pm EST. Fax (800) 286-1320

## 15. ACCESSORIES

The SkylinkHome™ System consists of many other devices such as SkylinkHome™ Remotes, Motion Sensor, ON/OFF Wall Switch, Wall Dimmer, Plug-In Dimmer with or without Repeater, Plug-In ON/OFF Control (Outdoor/Indoor), Screw-In Dimmer, ON/OFF/Dimming Control, ON/OFF Control, Smart Button™ Garage Door Control, etc. Please visit Skylink website at [www.skylinkhome.com](http://www.skylinkhome.com) for more information.



### CUSTOMER SERVICE

17 Sheard Avenue, Brampton, Ontario, Canada L6Y 1J3  
 Email: [support@skylinkhome.com](mailto:support@skylinkhome.com)  
<http://www.skylinkhome.com>  
 P/N: 101Z701-002  
 Patent Pending  
 ©2010 SKYLINK GROUP