



User Manual

Plug-In ON/OFF Control (Indoor)

Model: PM-318-2



1. Safety Information

This device complies with Part 15 of the FCC Rules. Operation is subject to the following two conditions:

- (1) This device may not cause harmful interference, and
- (2) This device must accept any interference received, including interference that may cause undesired operation.

WARNING:

Changes or modifications to this unit not expressly approved by the party responsible for compliance could void the user's authority to operate the equipment.

2. Package Contents



1x Plug-In ON/OFF Control (Indoor)
PM-318-2

3. Programming Transmitters

In order to operate the PM-318-2 remotely, transmitter or sensor must be programmed to the Plug-In ON/OFF Control (Indoor). Each module can be operated by up to 16 different transmitters (or 16 different command signals).

There are 2 operating modes with the PM-318-2:

1. On / Off Mode - When a valid signal is received, it will turn on or off a load.
2. Countdown Timer Mode - When a valid signal is received, the load will be on for a specific period of time, either 1 minute, 5 minutes, 15 minutes, 30 minutes, or 60 minutes, then off. This is mainly for energy saving.

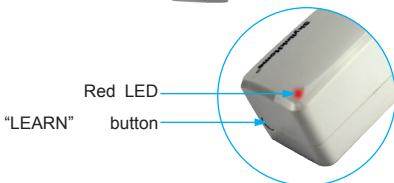
i The PM-318-2 is designed to operate maximum load of 1500W at 120VAC.

To program a transmitter into the PM-318-2, follow the instructions below:

Before you program a transmitter to the PM-318-2, decide the operating mode for this transmitter (On/Off Mode or Countdown Timer Mode).

i You must complete the programming sequence within the 15-second interval, otherwise, the module will quit from programming mode and you need to start again from step 3 if the red LED is off.

1. Plug in the PM-318-2 to an electrical outlet. The red LED flashes once quickly.
2. Plug in a light or a home appliance to the socket of the PM-318-2. The connected load (i.e., light) should be off.



3. Programming Transmitters

3. Press and hold the "LEARN" button for about 3 seconds, the red LED flashes, meaning it is in On/Off Mode programming sequence. Release the "LEARN" button if you are programming a transmitter to operate in On/Off Mode.
4. If you are programming a transmitter to operate in Countdown Timer Mode, continue to hold the "LEARN" button for about 10 seconds, until the red LED is on steadily. Release the "LEARN" button once the LED is on steadily.
5. Transmit a "Learn" code from the transmitter. Refer to the manual of the transmitter to transmit this "Learn" code.
6. Once the transmitter is programmed, the red LED flashes quickly then stops flashing. You have successfully programmed the transmitter.

Operating Mode	LED Indication during programming
On / Off	Flashing
Countdown Timer	Steadily On

4. ON / OFF Operation

The PM-318-2 allows on / off operation, when the programmed transmitter is activated.

Depends on the type of transmitter, different functions can be performed such as:

Individual On / Off, Zone On / Off, All On, All Off etc. - Motion Activation

Refer to the user's instructions of the transmitter for detailed instructions.

5. Countdown Timer Operating Mode

If a transmitter or a sensor is programmed to the PM-318-2 under the countdown timer mode, when that transmitter is activated, the load connected will be on for the predetermined timer interval, the LED on the PM-318-2 will also be on. After the timer interval, the load will be turned off.

Pressing a programmed button for ON/OFF mode can override timer operation.

To stop timer count down, press a programmed button for ON/OFF mode.

6. Set Timer Duration

This section is for transmitters that are programmed for Countdown Timer Mode.

The timer can be set to the following duration, meaning the light will stay on for the following time: 1 minute, 5 minutes, 15 minutes, 30 minutes, or 60 minutes. Only one timer interval can be set. To set the timer duration, follow the instructions below.

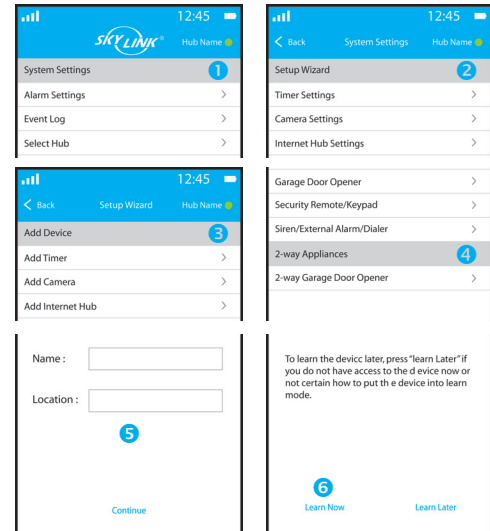
1. Plug in the module to an AC outlet, the red LED flashes once, so it is powered on properly.
2. Turn on the connected load by a programmed transmitter. The load must be ON in order to set the timer duration.
3. Press and hold the SET button for 3 seconds, the red LED flashes once. The number of flashes indicates the timer duration:
4. Continue to hold the SET button until it reaches the desired setting. The status will change every 6 seconds, i.e. hold the SET button, you will see the number of flashes changes from 1 to 2, 2 to 3, etc.

Number of Flashes	Timer Duration
1	1 min.
2	5 min.
3	15 min.
4	30 min.
5	60 min.

i Once the number of flashes reaches 5, it will stay at this setting. If you would like to go back to other settings, such as 1 flash, release the button and repeat from step 1 to start over.

7. Programming to the Internet Hub

1. Open SkylinkNet App and tap on "System Settings"
2. Tap on "Set-up Wizard"
3. Tap on "Add Device"
4. Tap on "2-way Appliances"
5. Name your 2-way appliance and location and tap on "Continue"
6. Refer to section 3 to set PM-318-2 in programming mode; then on the APP, tap on "Learn Now"



8. Erasing Transmitters

You may erase a transmitter or sensor from the module, but you cannot erase a specific device directly, you must erase all the wireless devices, then program the ones you want to keep. Follow the instructions below to erase programmed transmitters / sensors.

1. Power off the PM-318-2 by removing it from the AC socket.
2. Press and hold the SET button, while plugging in the module to an AC outlet.
3. The red LED will be on first, then flashes rapidly for 1 second, then on and off.
4. You may release the SET button, now you have successfully erased all the devices from the lighting receiver.

9. Technical Specifications

Input Voltage: 120V AC, 60Hz
 Maximum Rating: 12.5 Amps
 Operating Frequency: 317.5 MHz
 Operational Temperature: -4°F – 140°F (-20°C – 60°C)
 Humidity: 5% – 95%
 Range: Up to 500 feet in open area

10. One Year Warranty / Customer Service

This product is guaranteed to be free of defects in materials and workmanship for 1 year from the date of purchase. If this product is defective, call 1-800-304-1187 for repair or replacement parts. Guarantee does not include normal wear and tear or batteries.



If you have any questions, problems or missing parts, please call Skylink Customer Support:

1-800-304-1187

9:00 AM – 5:00 PM EST, Monday-Friday

Or e-mail us at support@skylinkhome.com

www.skylinkhome.com

P/N:101Y351