



User Manual

Motion Sensor PS2-MT



1. Safety Information

This device complies with Part 15 of the FCC Rules. Operation is subject to the following two conditions:

- (1) This device may not cause harmful interference, and
- (2) This device must accept any interference received, including interference that may cause undesired operation.

WARNING:

Changes or modifications to this unit not expressly approved by the party responsible for compliance could void the user's authority to operate the equipment.

CE - DECLARATION OF CONFORMITY:

This equipment complies with the requirements relating to electromagnetic compatibility, EN 301489-1, EN301489-3, EN300220-1, EN300220-2 and EN60950-1. This equipment conforms to the essential requirement of the 1999/5/EC R&TTE Directive.

2. Package Contents



Motion Sensor
PS2-MT



Ball Head
Joint



Mounting
Accessories

3. Insert Battery in the Motion Sensor

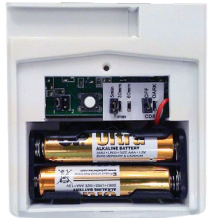
Requires 2 x AAA alkaline batteries. NOT INCLUDED.

1. Unscrew the compartment door and slide down to open.

2. Insert battery inside the compartment.

3. Leave compartment door open until all programming sections are completed.

3. Slide back and screw compartment door to close.



4. Program the PS2-MT with M series Main Console

Maximum 4 sensors in one zone. Programming a fifth sensor will displace the first sensor.

5. Program the PS2-MT with SkylinkNet Internet Hub

Must use the SkylinkNet App to program the PS2-MT with the SkylinkNet Internet Hub.

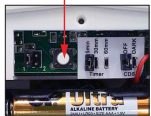


1. Press the learn button on the back of the M-Series Main Console for 3 seconds until the Zone 1 light is flashing.



2. Zone 1 is selected. Press the learn button to select the zone you want to program the sensor.

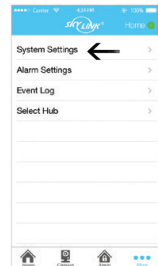
'SET' Button



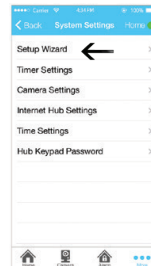
3. Open the PS2-MT battery door and press the 'SET' button.



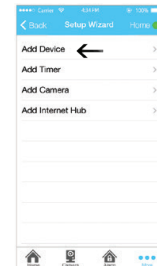
4. Once the PS2-MT is programmed, the Main Console will beep once and the corresponding zone LED will be off.



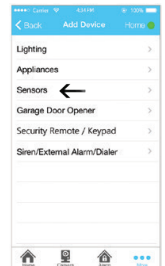
1. Go to "More" and tap on "System"



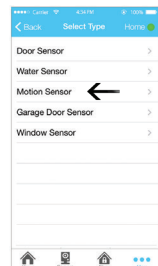
2. Tap on "Setup Wizard."



3. Tap on "Add Device."



4. Tap on "Sensors."



5. Tap on "Motion Sensor."



6. Name your Sensor, location and tap "Continue."



7. Tap on "Learn Now" and follow the video to activate the sensor.

6. Test the PS2-MT with M-Series Alert/Alarm System



1. Slide the switch at the back of the Main Console to Alert Mode.



2. Move in front of the PS2-MT to trigger the sensor. The LED will flash when the motion is detected.



1. Activate the PS2-MT by moving in front of the sensor. The LED will flash when motion is detected.



2. The blue icon will turn red indicating that the motion is detected.



3. The Main Console will start beeping and flashing the Zone LED.



4. The PS2-MT will stop beeping and flashing the LED if there is no motion detected for 15 seconds.



3. Don't move in front of the PS2-MT for 15 seconds.



4. The red icon will turn back to blue indicating that there is no motion detected.

9. Battery Indication/Sensor Failure M-Series Alert/Alarm System

- ❗ The corresponding zone LED in the Main Console will flash if a sensor failure or low battery occurs.

When a sensor failure occurs, try the following:

1. Check if the PS2-MT is located at where it should be.
2. Check if there is any physical damage to the PS2-MT.
3. Move the Main Console closer to the PS2-MT, if the red LED stops flashing, that means the Main Console or PS2-MT needs to be relocated.
4. Replace the battery of the sensor if the Main Console does not respond when the sensor is activated within short range.

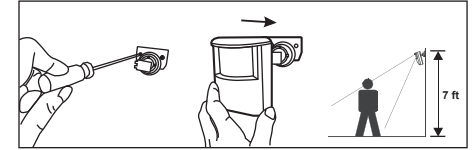
10. FAQ

- ❗ The M-Series Main Console panel does not respond to the PS2-MT?
 - A. You must program the PS2-MT to the control panel before they can work together.
- ❗ Can I erase just one sensor from a zone in the M-Series Main Console?
 - A. You must erase all the sensors in that zone and then program the sensor you want to keep.
- ❗ I have multiple sensors in a zone and the zone LED keep flashing indicating a sensor failure. How do I know which sensor is having the problem?
 - A. You need to test each sensor individually.

8. Install the PS2-MT

- ❗ The optimal location and height for best coverage is on a wall and 7 feet from the ground.

1. Join the socket base and ball head mount together.
2. Use the mounting accessories to screw the ball head joint on the wall.
3. Slide the PS2-MT in place.



One Year Warranty / Customer Service

This product is guaranteed to be free of defects in materials and workmanship for 1 year from the date of purchase. If this product is defective, call 1-800-304-1187 for repair or replacement parts. Guarantee does not include normal wear and tear or batteries.



If you have any questions, problems or missing parts, please call Skylink Customer Support:

1-800-304-1187

9:00 AM – 5:00 PM EST, Monday-Friday

Or e-mail us at support@skylinkhome.com

www.skylinkhome.com